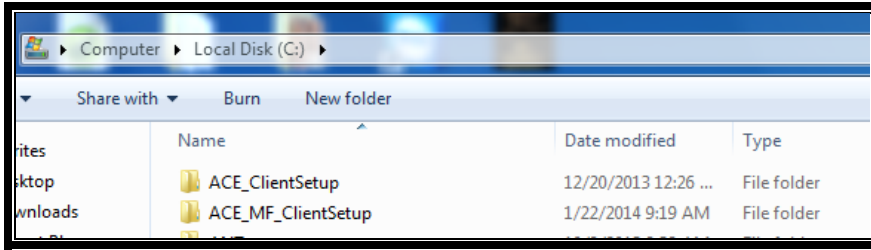
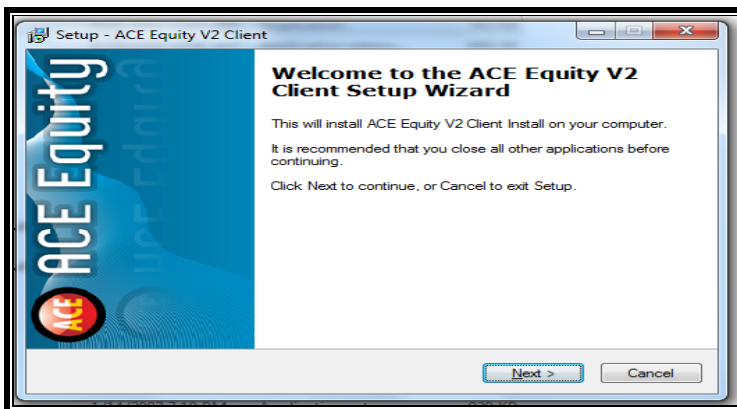


Go to Run: [\\192.168.251.98](http://192.168.251.98) → acemfv2 → ClientSetup

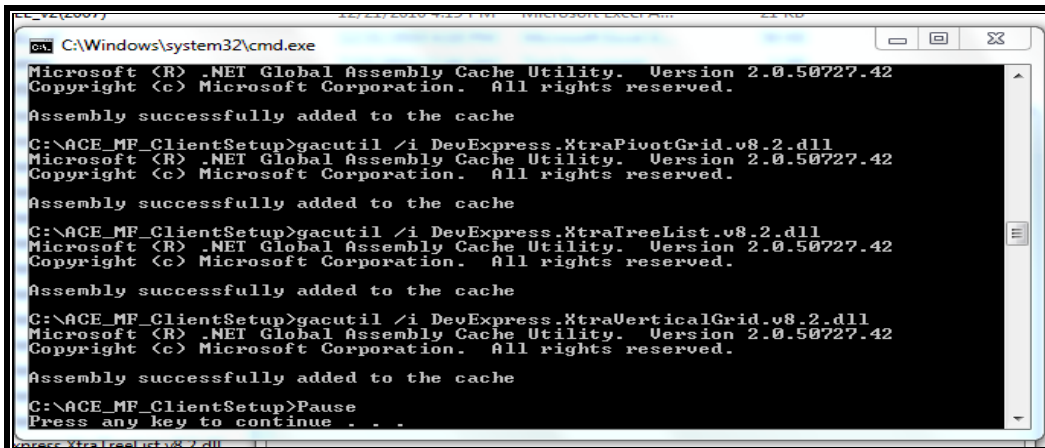
Copy the ClientSetup Folder into your C drive (it's around 58.1 MB) Once its copy then just rename that folder to "ACE\_MF\_ClientSetup"



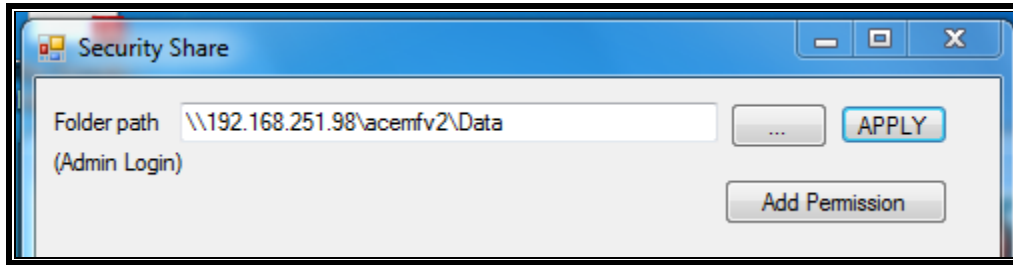
Then open that "ACE\_ClientSetup" folder from your C: Drive → ClientSetup (Application) Just click on that Once you click on that setup then Setup screen will display as below



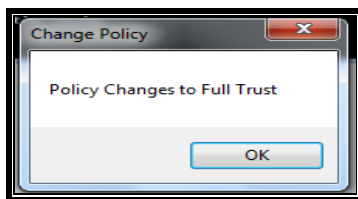
Click on "Next" then it will open the command prompt screen as below



Now press "Enter" It will asking for Security Share "Folder Path" write down this path on that Folder path Enter Path : <\\192.168.251.98\acemfv2\Data>



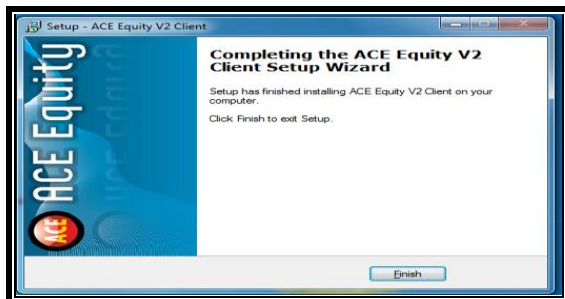
Once you press APPLY then its Show following Screen for Change Policy



Then Press "OK" button... Then Click on Add Permission Button

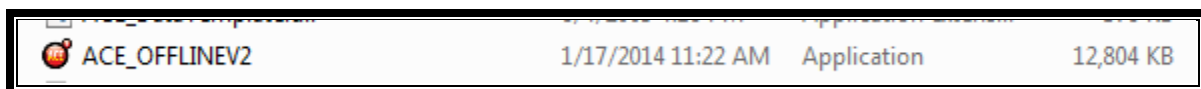


Then your permission is saved.. Now close that popup and click on Finish as below screen



Then you have to copy the short cut from the following path

<\\192.168.251.98\acemfv2>



Then right click on "ACE\_OFFLINEV2" → Send to → Desktop (short cut). It will create short cut on your desktop....

That's It... Now go to your desktop and click on that "ACE\_OFFLINEV2" Icon..

You will see the following screen...



Now Enter Username & Password: Admin (for Both)