

THOMSON REUTERS EIKON

PC REQUIREMENTS THOMSON REUTERS EIKON 4.0



CHAPTER 1 PC REQUIREMENTS

| Windows 7 | Windows 8 |
|--|--|
| OPERATING SYSTEM | |
| <ul style="list-style-type: none"> • Enterprise • Professional • Ultimate • Home Premium • Service Pack 1 supported • 32-bit & 64-bit versions | <ul style="list-style-type: none"> • Basic • Enterprise • Pro • 32-bit & 64-bit versions |
| REQUIRED HARDWARE | |
| <ul style="list-style-type: none"> • Intel Core 2 Duo, 2.4GHz or higher • 4GB RAM* • 1.6GB disk space • Color depth 32-bit | <ul style="list-style-type: none"> • Intel Core 2 Duo, 2.4GHz or higher • 4GB RAM* • 1.6GB disk space • Color depth 32-bit |
| RECOMMENDED TEMPORARY INTERNET FILES SIZE | |
| <ul style="list-style-type: none"> • 250MB (Required: 50MB) | <ul style="list-style-type: none"> • 250MB (Required: 50MB) |

* 8GB of RAM is recommended for the 64-bit versions of Windows 7 and Windows 8 operating systems.

N.B. In cases where Thomson Reuters Eikon is installed on systems not meeting the hardware requirements, Thomson Reuters may not be able to assist or provide support with performance-related service requests.



CHAPTER 2 REQUIRED SOFTWARE

| SOFTWARE | RECOMMENDED VERSION |
|--|--|
| Microsoft Office | 32-bit: <ul style="list-style-type: none"> • Microsoft Office 2007 SP2 + KB968863 or KB2345035, SP3 • Microsoft Office 2010 + KB2405840 32-bit and 64-bit: <ul style="list-style-type: none"> • Microsoft Office 2010 SP1, SP2 • Microsoft Office 2013 |
| Visual Basic for Applications (32-bit) | Versions 6.4, 6.5, 7.0, 7.1 |
| MSI Installer | Version 5.0 |
| Microsoft XML 3.0 | Version 3.0 SP1 or higher |
| Microsoft XML 6.0 | Version 6.0 or higher |
| Graphic API | DirectX 9.0 or higher |
| Internet Explorer | <ul style="list-style-type: none"> • IE8 • IE9 • IE10 • IE11 |
| Microsoft .Net Framework | <ul style="list-style-type: none"> • Microsoft .Net Framework Client Profile 4 • Microsoft .Net Framework 4 or higher. |
| Adobe | <ul style="list-style-type: none"> • Acrobat Reader 7.0 or higher |

© 2014 Thomson Reuters. All rights reserved.
 Republication or redistribution of Thomson Reuters content, including by framing or similar means, is prohibited without the prior written consent of Thomson Reuters. 'Thomson Reuters' and the Thomson Reuters logo are registered trademarks and trademarks of Thomson Reuters and its affiliated companies.

For more information
 Send us a sales enquiry at
thomsonreuters.com/about/contact_us
 Read more about our products at
thomsonreuters.com/products_services
 Find out how to contact your local office
thomsonreuters.com/about/locations



THOMSON REUTERS™

THOMSON REUTERS EIKON

GETTING STARTED GUIDE



CHAPTER 1 MACHINE PRE-REQUISITES

Refer to the Thomson Reuters Eikon PC Requirements document which is available on Customer Zone.

Link: <https://customers.thomsonreuters.com/pazdocsunauth/pazDocs.aspx?did=529318>



CHAPTER 2 STEPS TO INSTALL THOMSON REUTERS EIKON

Installing Thomson Reuters Eikon is a simple and straight forward process. In order to access the installation package, you need to have received your Thomson Reuters Eikon Welcome e-mail from Thomson Reuters. The e-mail contains your personalized identifier along with a unique address allowing you to activate your login on the Thomson Reuters Platform.

If you have received your Welcome e-mail and you have not yet activated your login, refer to the instructions included with the Welcome e-mail for the first steps to access Thomson Reuters Eikon.

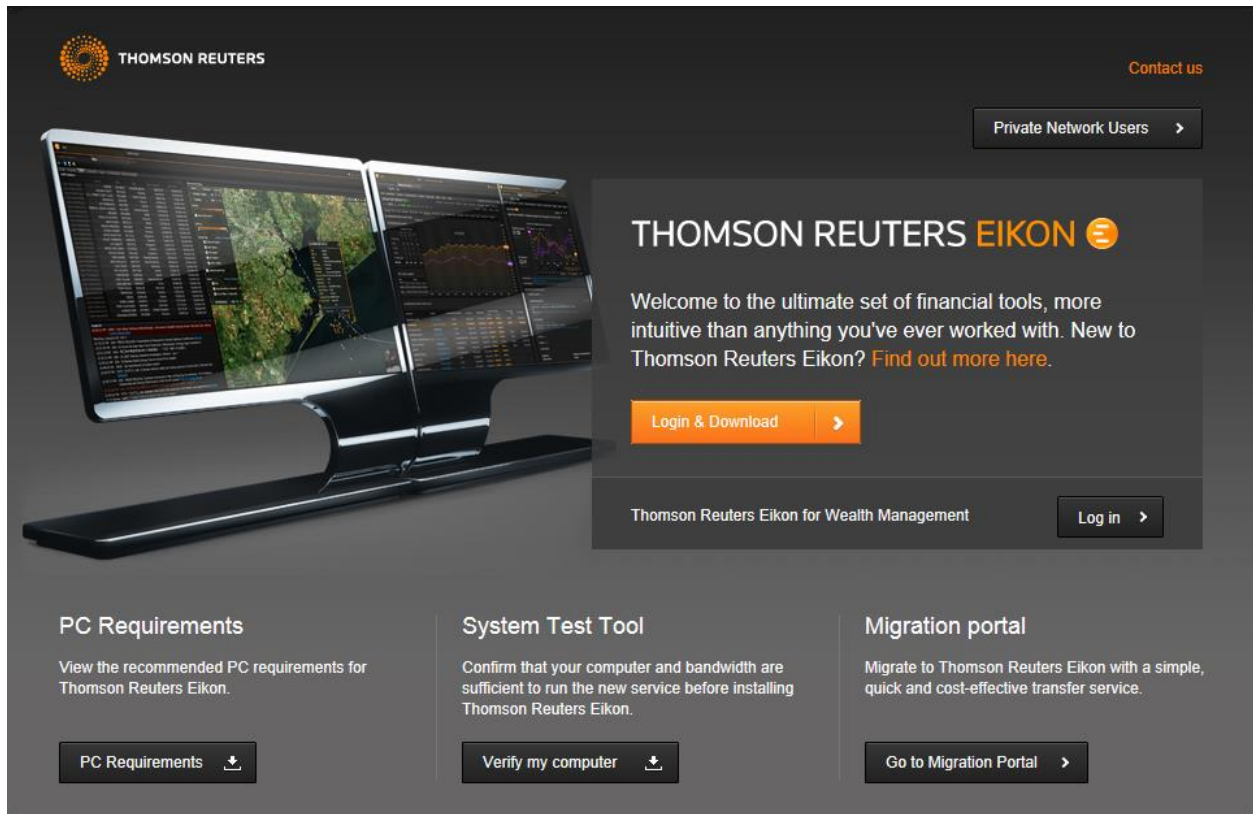
If you have not received the Welcome e-mail and you do not have a valid Thomson Reuters Eikon login, please contact Thomson Reuters. You cannot install the product without a valid login.

The Thomson Reuters Eikon installation package is available at the following address:
<https://customers.thomsonreuters.com/eikon/>

Use this page if you want to install the product at home or on a secondary workstation.

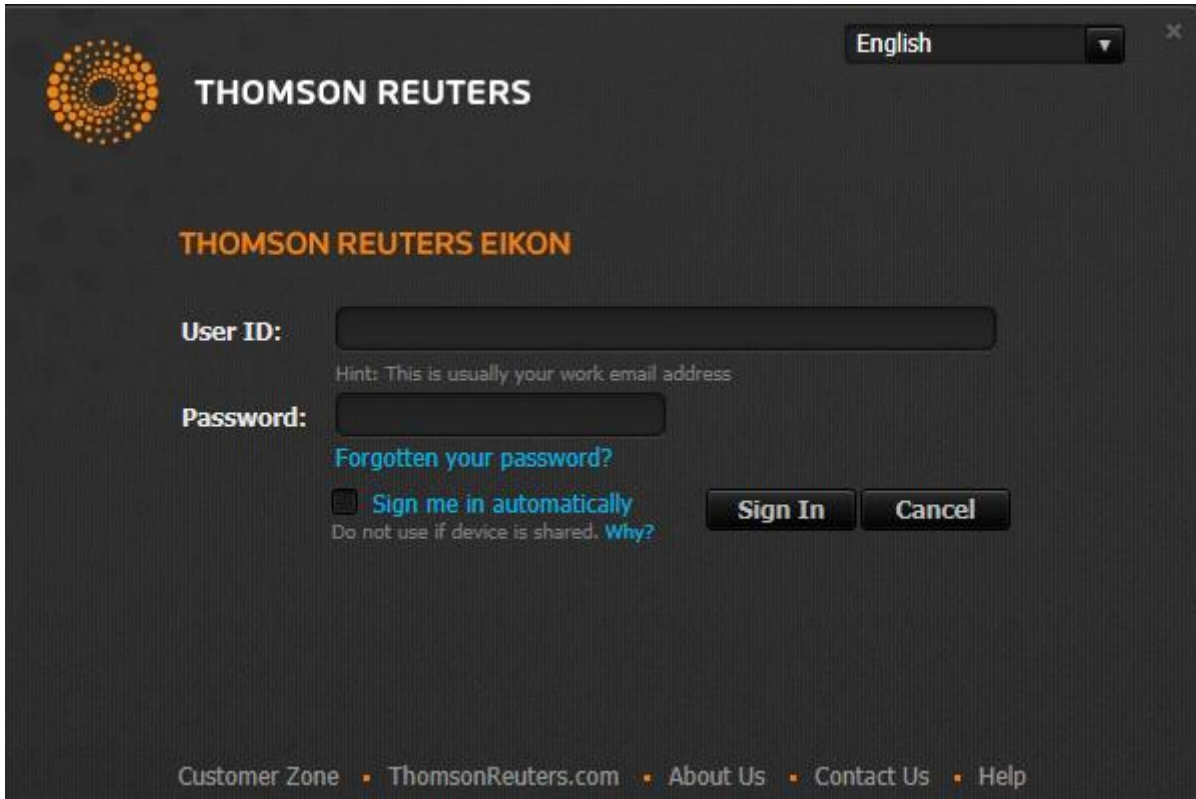
The installation process is described below. You will require a valid, activated, Thomson Reuters Eikon login.

From the main Thomson Reuters Eikon installation home page, click on the “Install Product” button to initiate the installation:

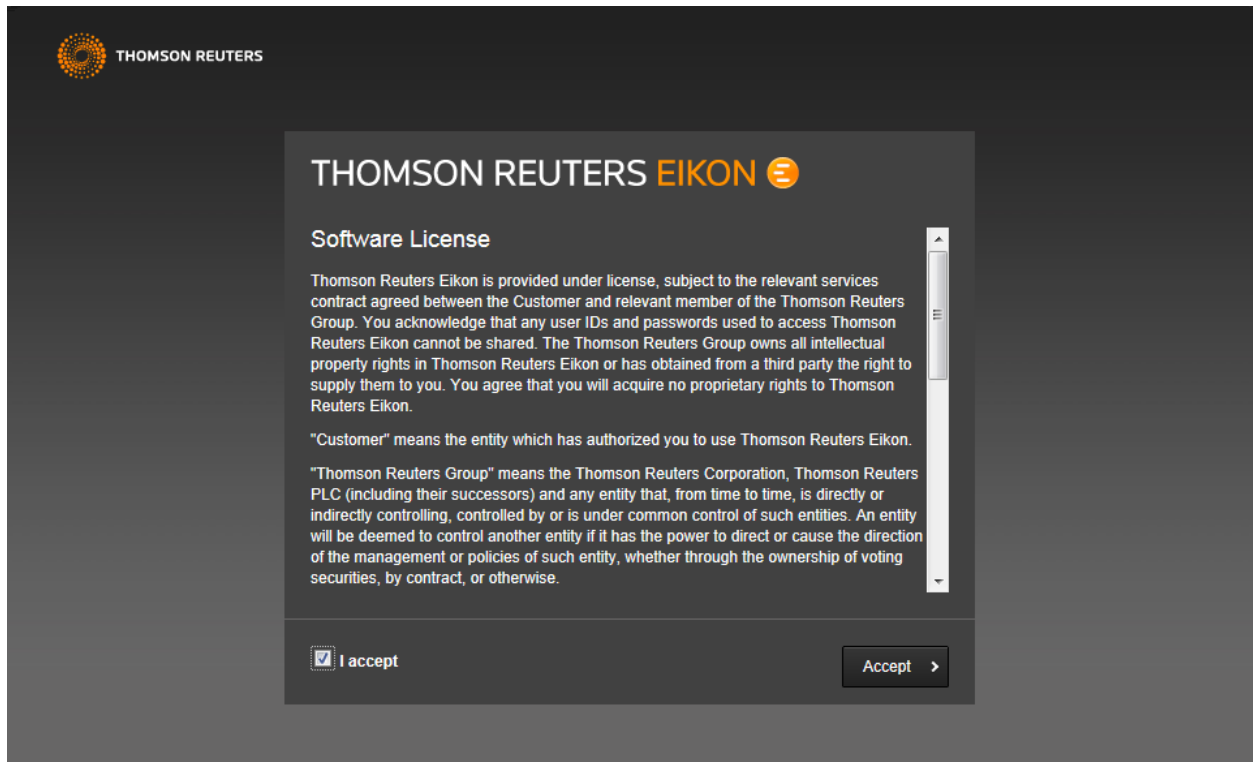


- Clicking on the “Login & Download” button will display the Thomson Reuters Platform sign-on page

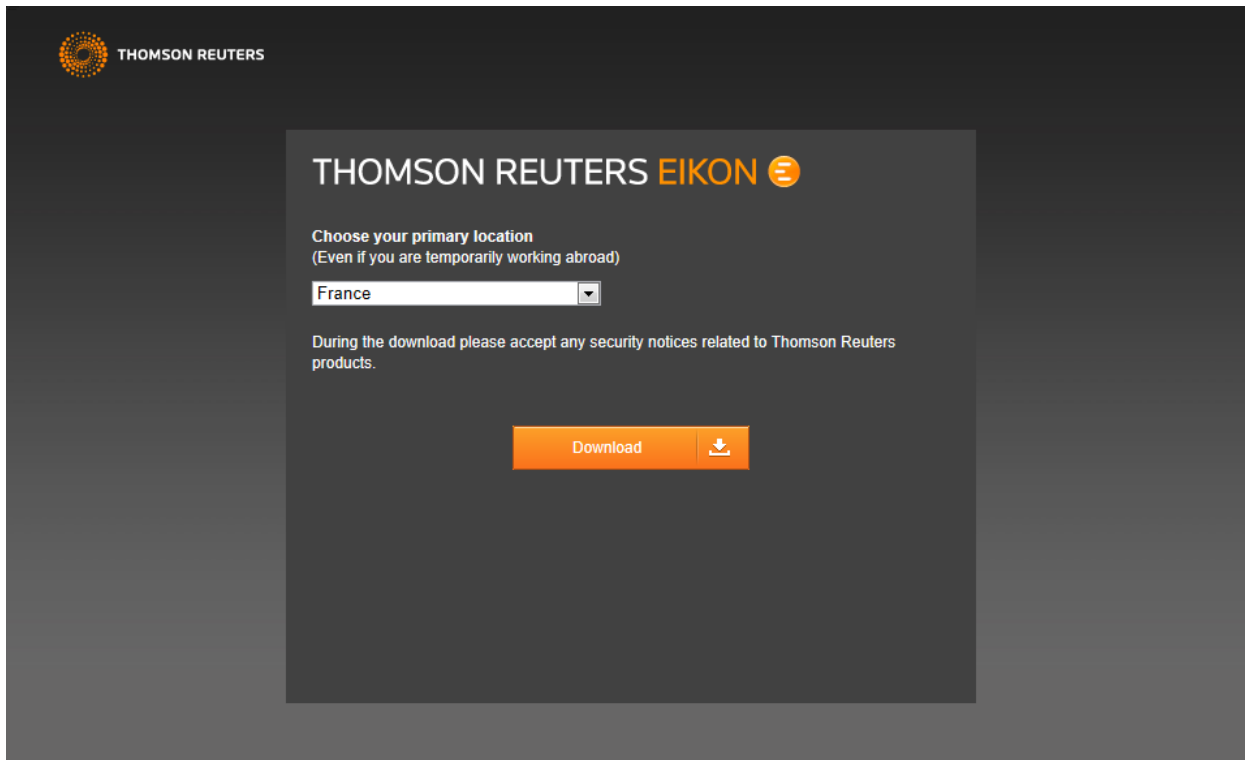




- Enter your valid ID and password and login to the platform. In case this is the first time you connect to Thomson Reuters Eikon, you should follow the instructions provided in your Welcome e-mail.
- You will be then redirected to the License agreement page.

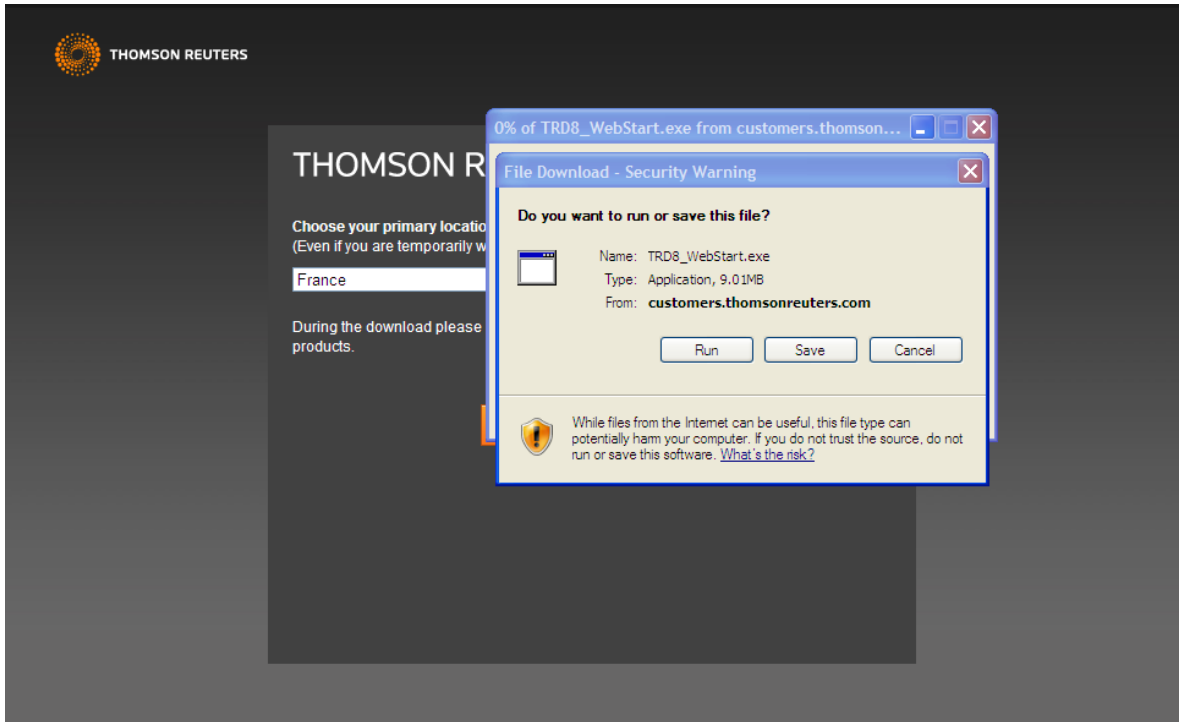


- Check “I accept” and click “Accept” to move on to the download page.
- Choose your primary office location from the drop down menu and then click on the “Download” button.
-

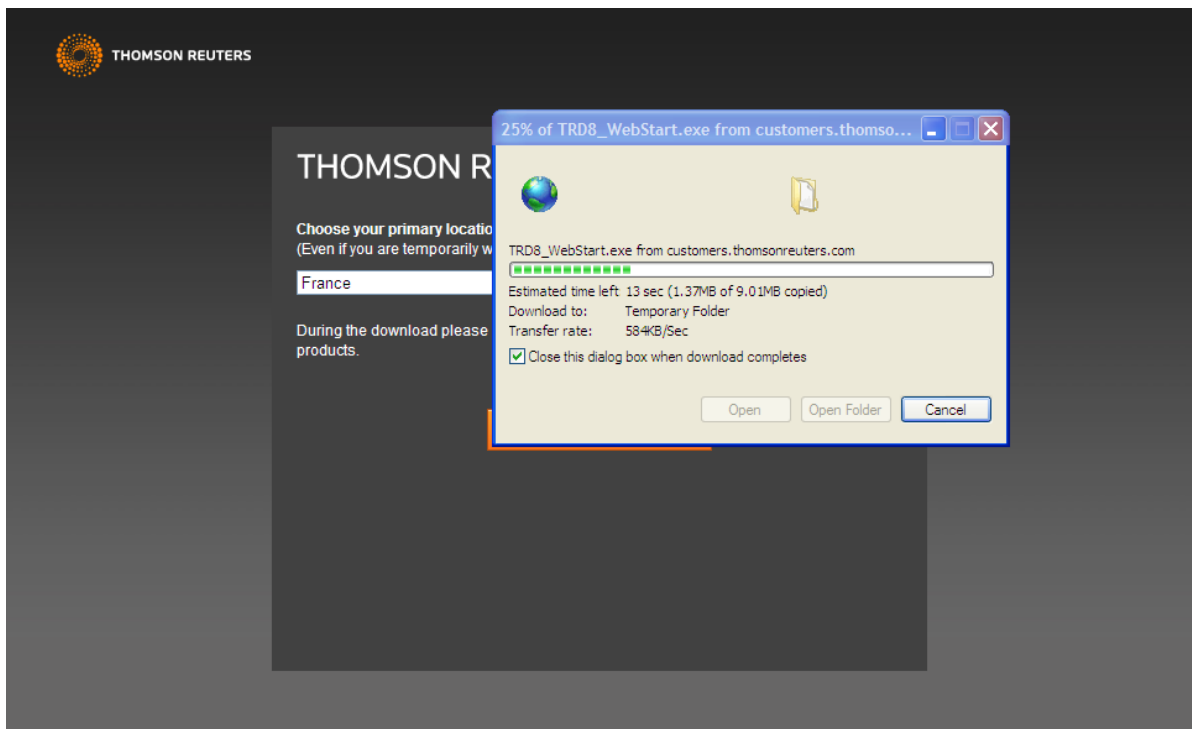


- The standard Internet Explorer file download message box is displayed as shown below
- Click on ‘Run’.
Note: If you are installing on Windows Vista or Windows 7 with User Access Rights activated the default installation is a per-user installation. If you want to perform a per-machine installation you should save the installation starter locally to your workstation and then right click on it and select “Run as administrator”.



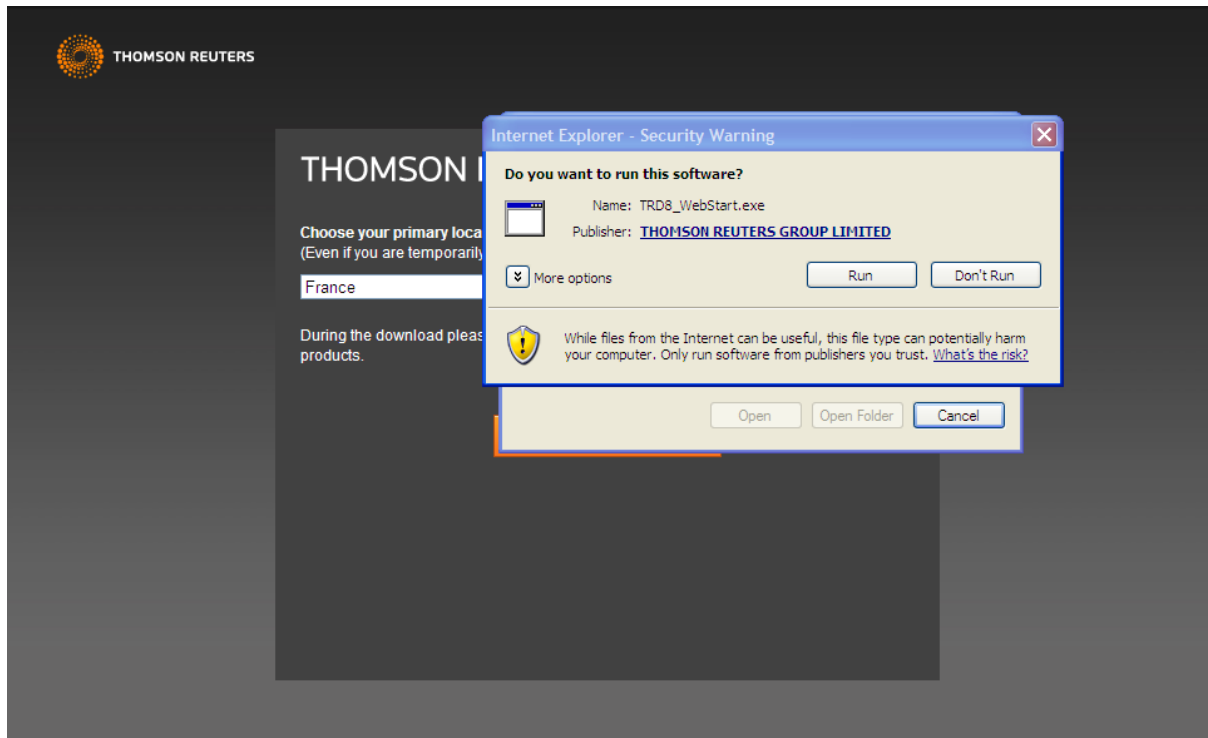


- The Eikon installer is downloaded locally to your workstation

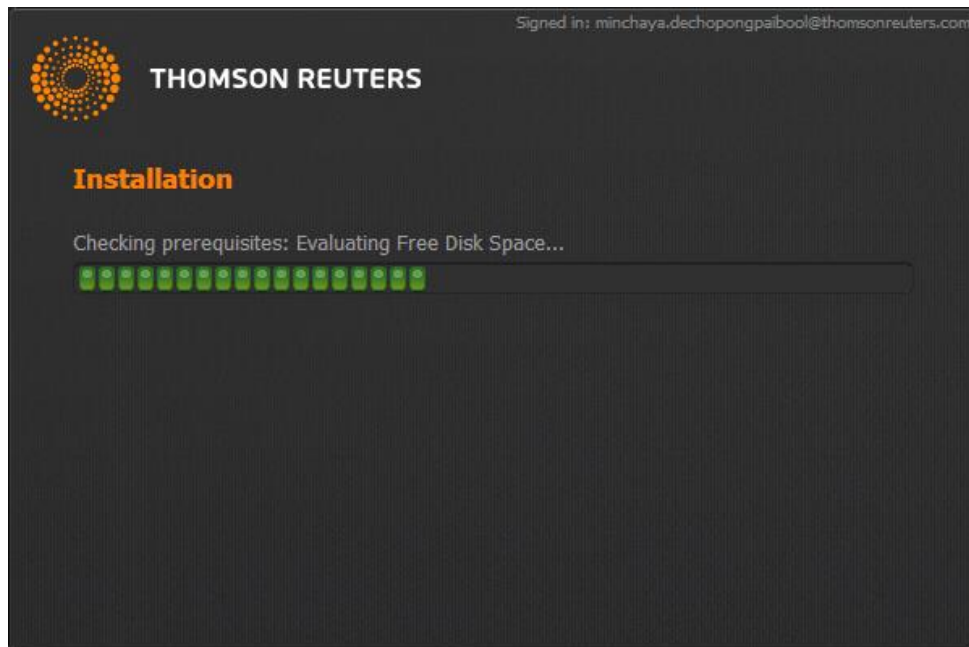


- Select the Run option on the Security Warning dialog



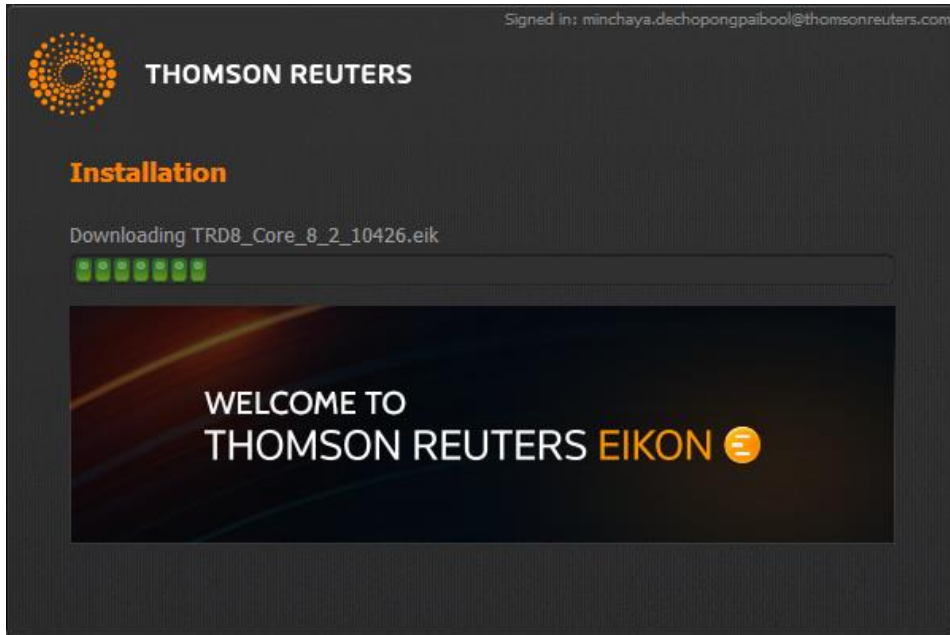


- The following screen will be displayed, showing that the System test tool is evaluating your system
- Some warning messages may be displayed if your system does not meet all the minimum software and hardware pre-requisites. If this happens, please follow the instructions displayed on the screen.

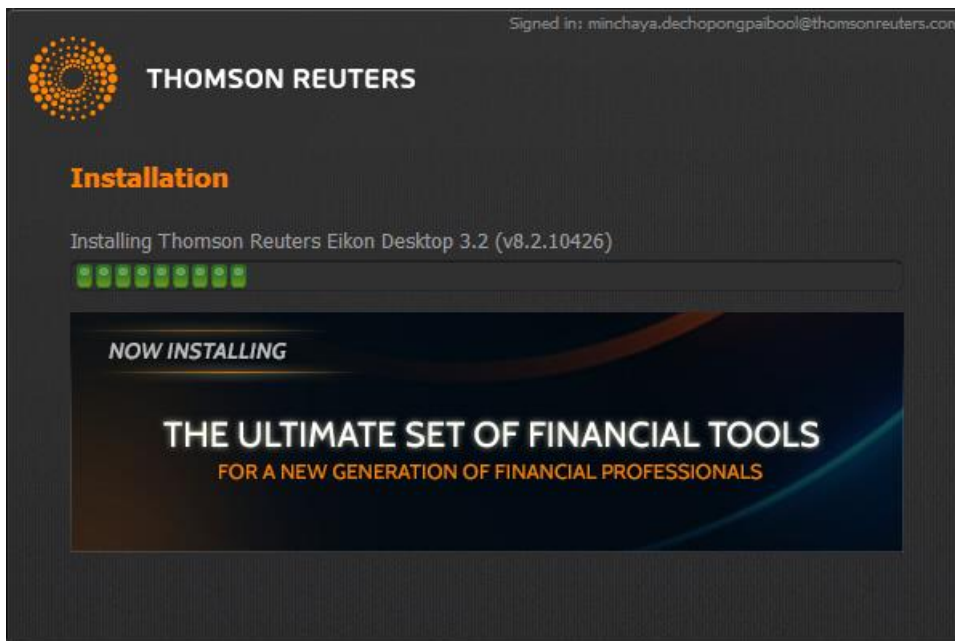


- The installation package is downloaded from the update service:

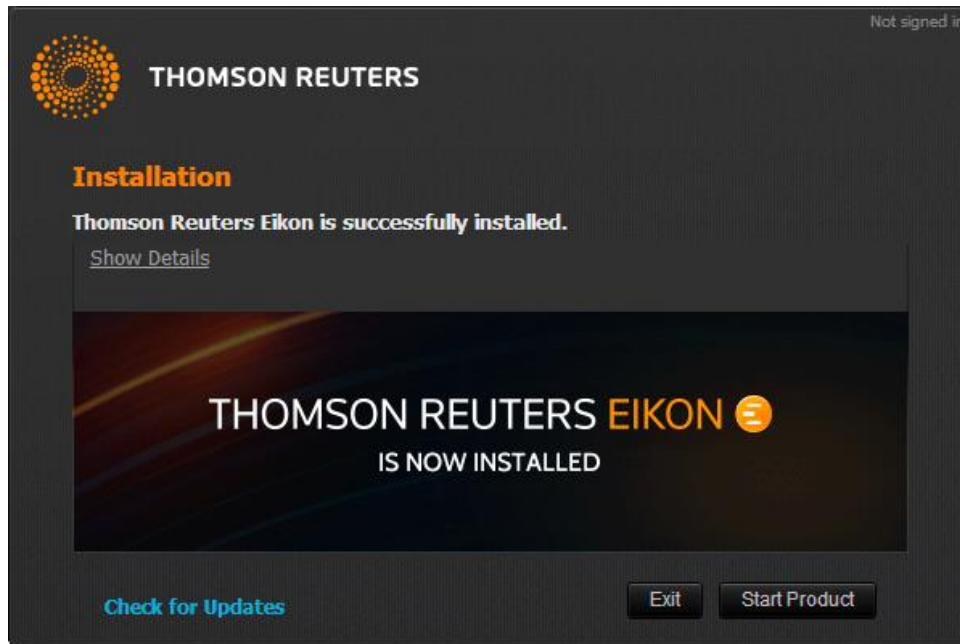




- The downloaded package is installed on your workstation



- At the end of the installation, if it was successful, you should see the following screen



- You can now start your Thomson Reuters Eikon desktop:

If Thomson Reuters Eikon did not install successfully, please use the Contact Us button located in the top right corner of this link: https://customers.thomsonreuters.com/eikon/product_page.html to report the problem.

© 2013 Thomson Reuters. All rights reserved.
Republication or redistribution of Thomson Reuters content, including by framing or similar means, is prohibited without the prior written consent of Thomson Reuters. 'Thomson Reuters' and the Thomson Reuters logo are registered trademarks and trademarks of Thomson Reuters and its affiliated companies.

For more information
Send us a sales enquiry at
http://thomsonreuters.com/about/contact_us
Read more about our products at
http://thomsonreuters.com/products_services
Find out how to contact your local office
<http://thomsonreuters.com/about/locations>

