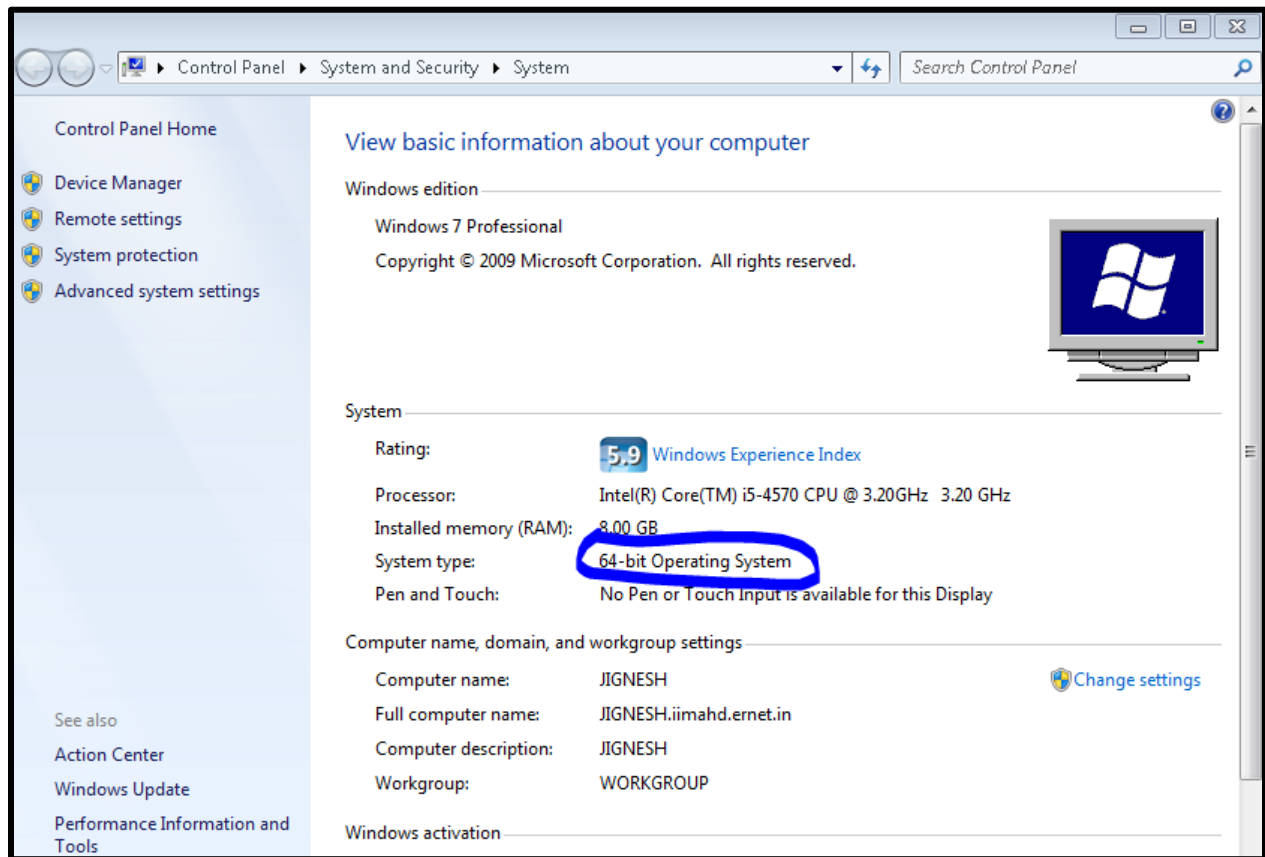


## How to check machine configuration (system environment)?

- Right click on My Computer (from the Desktop) >> Properties >> (Screenshot)

OR

- Control Panel >> System and Security >> System (Screenshot)



NOTE:

The 123D Design software is already installed in Library Cyber Lab  
i.e. **PC-3, PC-4, PC-5** and **PC-13**