

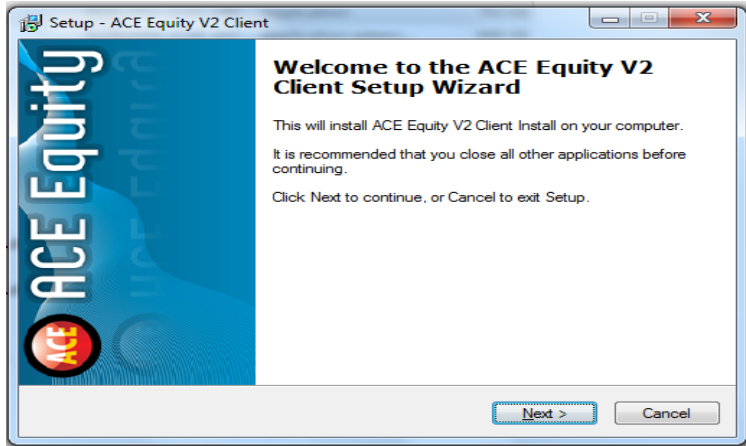
## ACE Equity (offline) [admin / admin]

---

Go to Run: [\\192.168.251.98](http://192.168.251.98) → ACE Equity v2 → ClientSetup

Copy the ClientSetup Folder into your C drive (it's around 58 MB) Once it's copy then just rename that folder to "ACE\_ClientSetup"

Then open that "ACE\_ClientSetup" folder from your C: Drive → ClientSetup (Application) Just click on that Once you click on that setup then Setup screen will display as below



Click on "Next" then it will open the command prompt screen as below

```
CA:\Windows\system32\cmd.exe
Microsoft (R) .NET Global Assembly Cache Utility. Version 2.0.50727.42
Copyright (c) Microsoft Corporation. All rights reserved.

Assembly successfully added to the cache

C:\ACE_ClientSetup>gacutil /i DevExpress.XtraPivotGrid.v8.2.dll
Microsoft (R) .NET Global Assembly Cache Utility. Version 2.0.50727.42
Copyright (c) Microsoft Corporation. All rights reserved.

Assembly successfully added to the cache

C:\ACE_ClientSetup>gacutil /i DevExpress.XtraTreeList.v8.2.dll
Microsoft (R) .NET Global Assembly Cache Utility. Version 2.0.50727.42
Copyright (c) Microsoft Corporation. All rights reserved.

Assembly successfully added to the cache

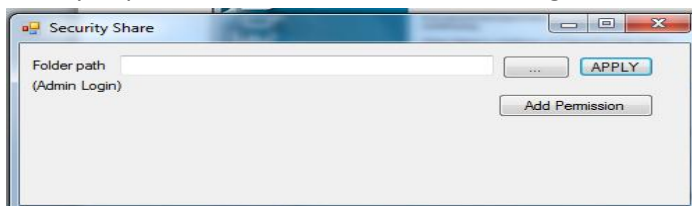
C:\ACE_ClientSetup>gacutil /i DevExpress.XtraVerticalGrid.v8.2.dll
Microsoft (R) .NET Global Assembly Cache Utility. Version 2.0.50727.42
Copyright (c) Microsoft Corporation. All rights reserved.

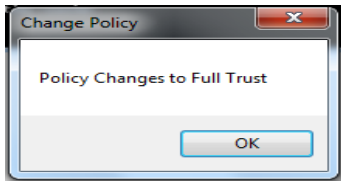
Assembly successfully added to the cache

C:\ACE_ClientSetup>Pause
Press any key to continue . . .
```

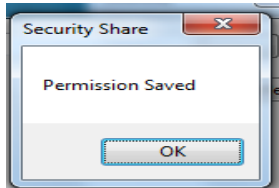
Now press "Enter" It will asking for Security Share "Folder Path" write down this path on that Folder path Enter Path: [\\192.168.251.98](http://192.168.251.98)\ACE Equity v2\Data

Once you press APPLY then it's Show following Screen for Change Policy.

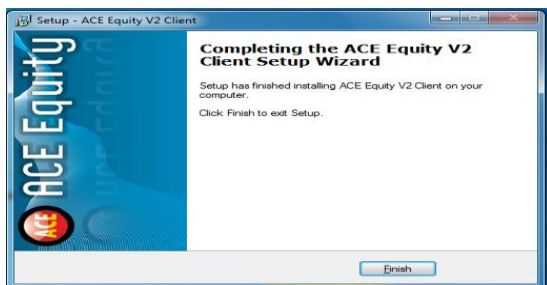




Then Press "Ok" button... Then Click on Add Permission Button



Then your permission is saved.. Now close that popup and click on Finish as below screen

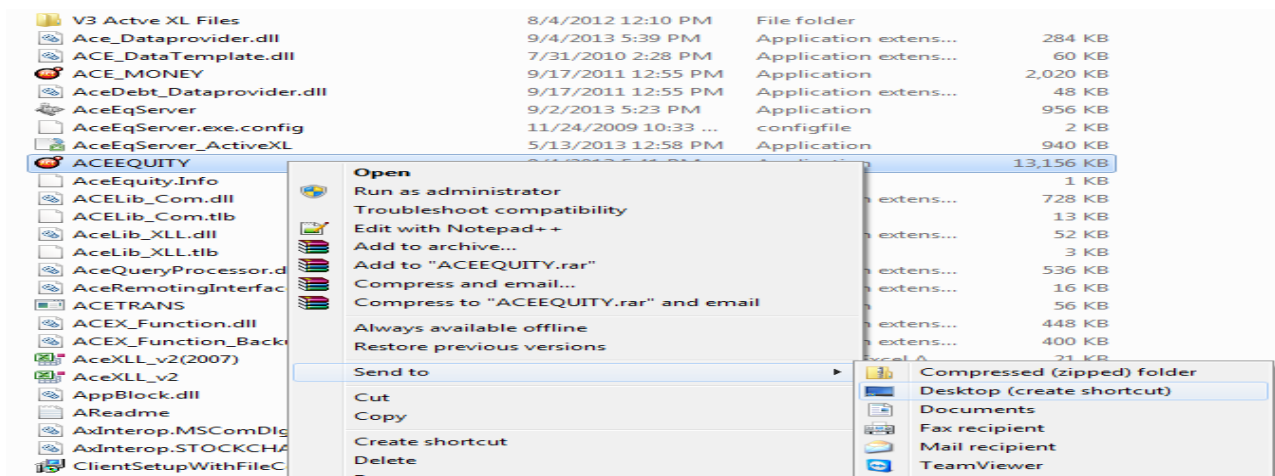


Then you have to copy the short cut from the following path

<\\192.168.251.98\ACE Equity v2\>

Then right click on "ACEEQUITY" → Send to → Desktop(short cut)

It will create short cut on your desktop....



**Username & Password both are admin**

# Advance Settings

---

If you are still facing issues in server/database connection, please follow the below instruction.

## Step 1 : Adding IP address on your host file

Windows 8, Windows 7 and Windows Vista use User Account Control (UAC), so **Notepad must be run as Administrator.**

### For Windows 8

1. Press the Windows key.
2. Type Notepad in the search field.
3. In the search right click Notepad and select **Run as administrator.**
4. In Notepad, open the following file:  
c:\Windows\System32\Drivers\etc\hosts
5. Make the necessary changes to the hosts file.
6. Click **File** -> **Save** to save your changes.

### For Windows 7 and Windows Vista

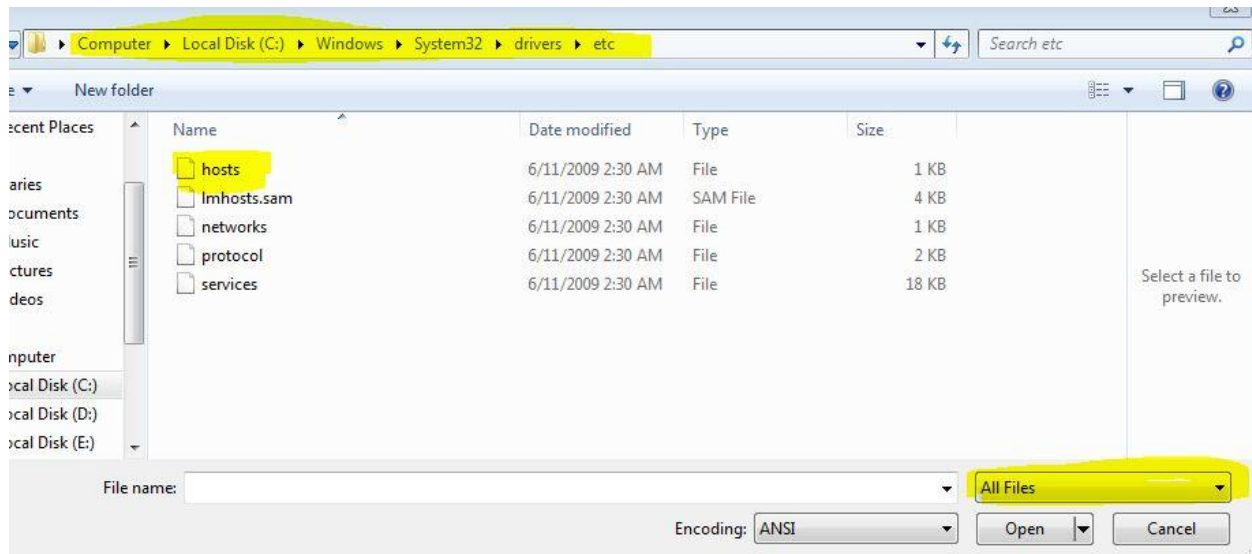
1. For Click **Start** -> **All Programs** -> **Accessories.**
2. Right click Notepad and select **Run as administrator.**
3. Click **Continue** on the "Windows needs your permission" UAC window.
4. When Notepad opens Click **File** -> **Open.**
5. In the filename field type:  
C:\Windows\System32\Drivers\etc\hosts
6. Click **Open.**
7. Make the necessary changes to the hosts file.
8. Click **File** -> **Save** to save your changes.

### Windows NT/2000/XP

1. Click **Start** -> **All Programs** -> **Accessories** -> **Notepad.**
2. Click **File** -> **Open.**
3. In the filename field type:  
C:\Windows\System32\Drivers\etc\hosts
4. Click **Open.**
5. Make the necessary changes to the hosts file.
6. Click **File** -> **Save** to save your changes.

## Below two screen sorts for Host file location and content

Location : C → Windows → System32 → drivers → etc



```
..
# For example:
#
#      102.54.94.97      rhino.acme.com      # source server
#      38.25.63.10     x.acme.com           # x client host

# localhost name resolution is handled within DNS itself.
#      127.0.0.1       localhost
#      ::1            localhost

# Add following 2 lines for Prowess, ACE Equity, ACE Mutual Fund & CAPITALINE
192.168.251.98        VSLIIMATEST
192.168.251.200      cmie
```

Add those above two lines on your hosts file and restart your PC.

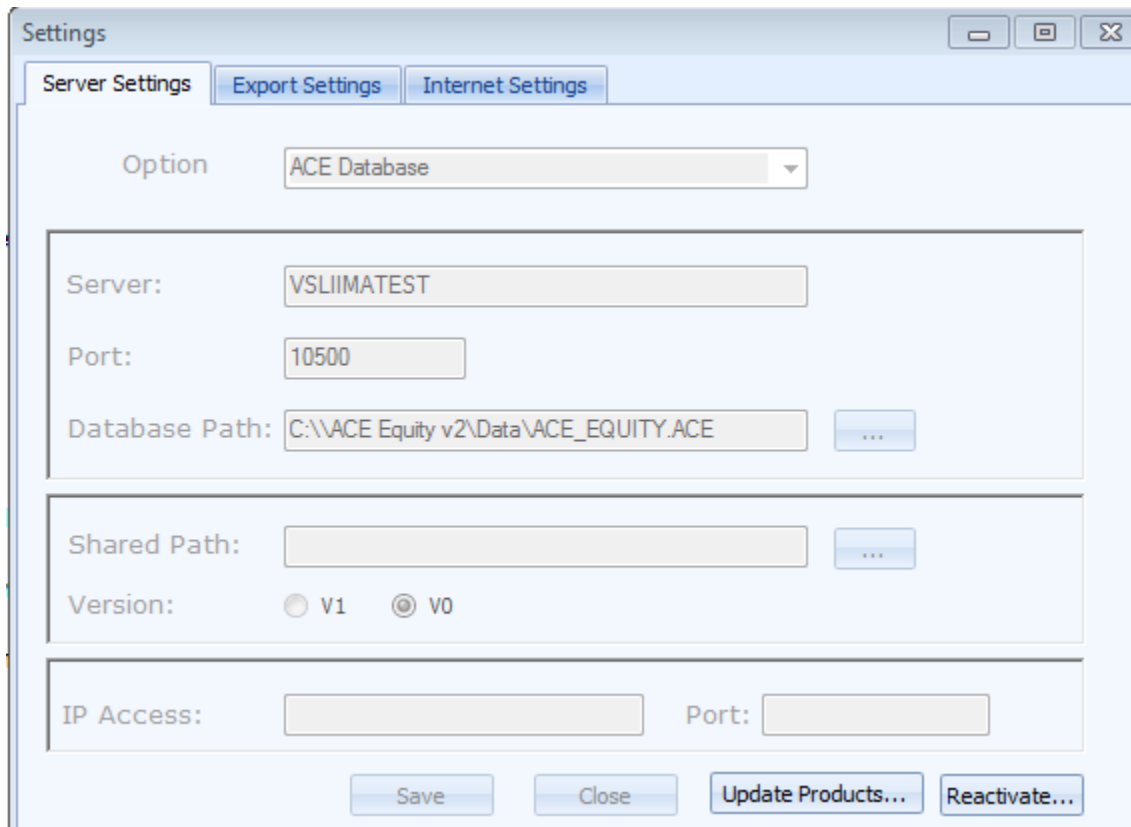
## Step 2 : Set database path

If you are getting Database Path error then you have to set the path as following

Currently, Your database path look like : <\\192.168.251.98\ACE Equity v2\Data\ACE EQUITY.ACE>

Replace that Database Path to following Path

**C:\\ACE Equity v2\Data\ACE\_EQUITY.ACE**



The screenshot shows a 'Settings' dialog box with three tabs: 'Server Settings', 'Export Settings', and 'Internet Settings'. The 'Server Settings' tab is active. Under the 'Option' dropdown, 'ACE Database' is selected. The 'Server' field contains 'VSLIIMATEST', the 'Port' field contains '10500', and the 'Database Path' field contains 'C:\\ACE Equity v2\Data\ACE\_EQUITY.ACE'. Below this, the 'Shared Path' field is empty, and the 'Version' field has 'V0' selected with a radio button. At the bottom, there are buttons for 'Save', 'Close', 'Update Products...', and 'Reactivate...'. The 'IP Access' and 'Port' fields at the bottom are also empty.

After modify the path click on save button

**Note: If you still facing any issue then please let us know on [libraryit@iimahd.ernet.in](mailto:libraryit@iimahd.ernet.in)**

**OR call us on 4983**

---