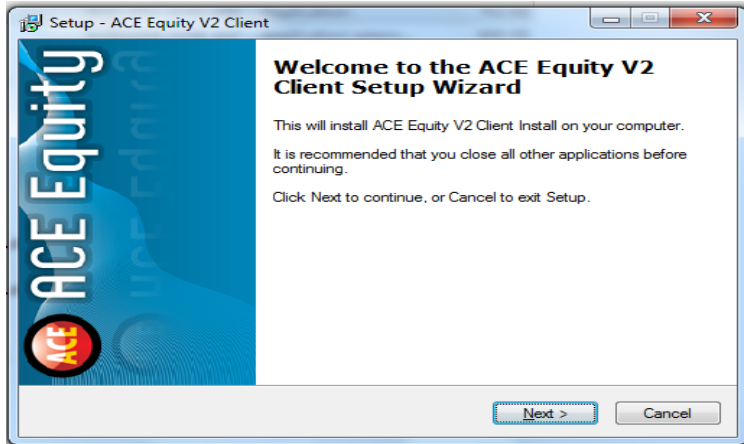


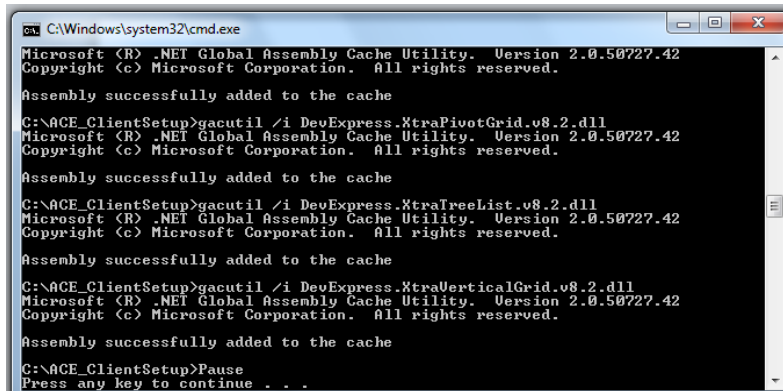
Go to Run: [\\192.168.251.98](http://192.168.251.98) → ACE Equity v2 → ClientSetup

Copy the ClientSetup Folder into your C drive (it's around 58 MB) Once its copy then just rename that folder to "ACE\_ClientSetup"

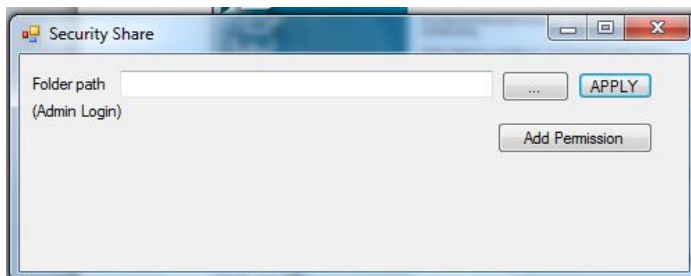
Then open that "ACE\_ClientSetup" folder from your C: Drive → ClientSetup (Application) Just click on that Once you click on that setup then Setup screen will display as below



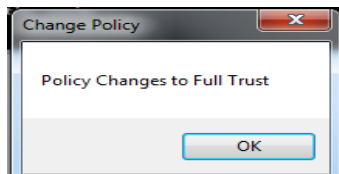
Click on "Next" then it will open the command prompt screen as below



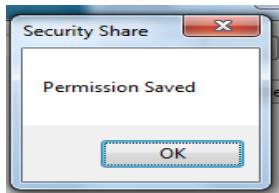
Now press "Enter" It will asking for Security Share "Folder Path" write down this path on that Folder path Enter Path : [\\192.168.251.98](http://192.168.251.98)\ACE Equity v2\Data



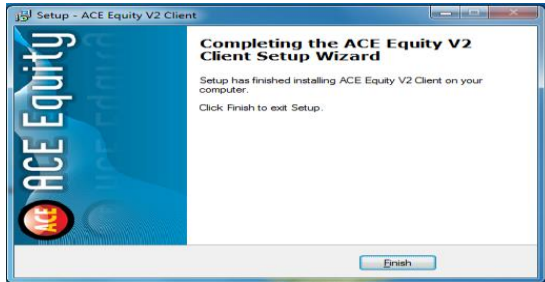
Once you press APPLY then its Show following Screen for Change Policy



Then Press "Ok" button... Then Click on Add Permission Button



Then your permission is saved.. Now close that popup and click on Finish as below screen

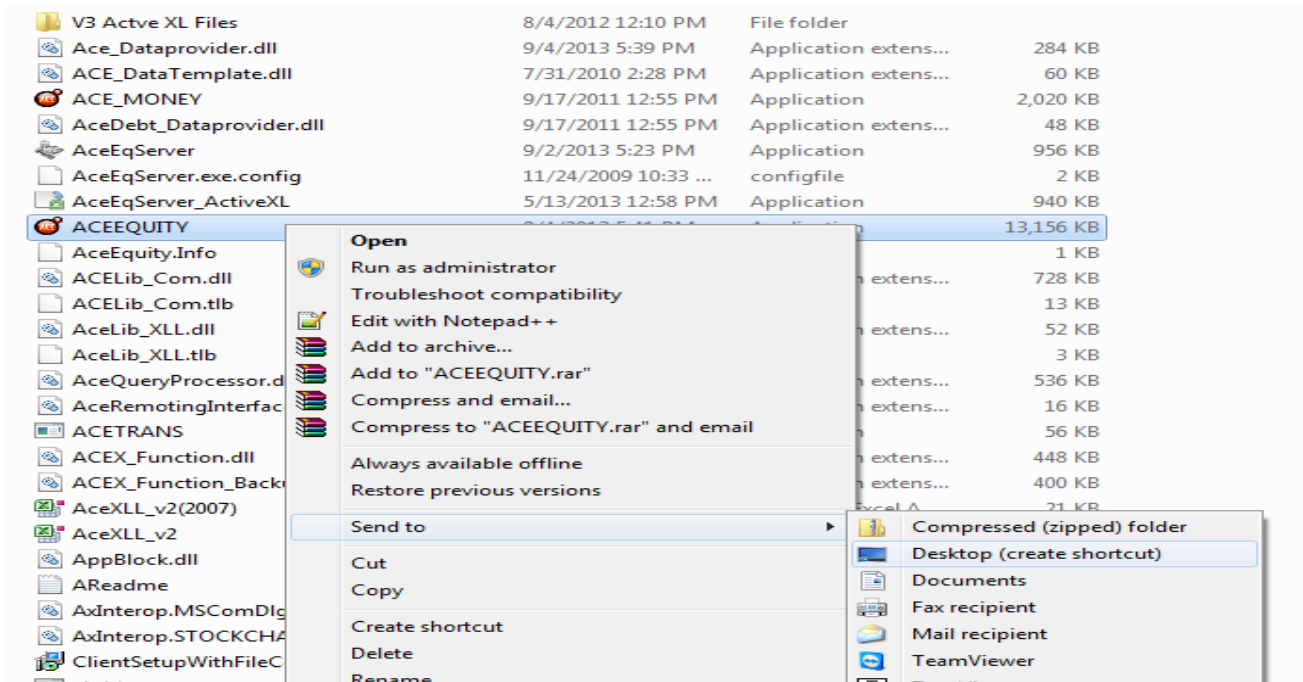


Then you have to copy the short cut from the following path

<\\192.168.251.98\ACE Equity v2\>

Then right click on "ACEEQUITY" → Send to → Desktop(short cut)

It will create short cut on your desktop....



**Username & Password both are admin**