

VSL DATABASE GUIDE

CMIE PACE

Registration Based



Introduction

"Prowess Application for Credit Evaluation (PACE)" is a database application that enables the evaluation of corporate credit proposals of banks and NBFCs. The principal source of this database is the Annual Reports of individual companies, and it covers approx. 51,262 listed and unlisted companies that are updated continuously with 10-year historical data. It provides a set of analytical ratios built over a standardized database which is a pre-requisite for the evaluation of credit proposals in banks. It also provides financial data and analytical balances, as well as peer comparison and industry benchmark comparison tables on a multidimensional level.

All Databases

☰ Company & Industry (53)

Click on the CMIE PACE Database

ACE Equity (Standalone) (Contact Library Staff for Installation) 📄	ACE Knowledge & Research Portal (Online) 📄	ACE Mutual Fund (Standalone) (Contact Library Staff for Installation) 📄
Ad Age Datacenter	AGM/EGM & Postal Ballot Resolutions	Annual Reports Library (Contact Library Staff) 📄
Auditors	Bloomberg (Available only in Library) 📄	Board Meeting Resolutions
BoardEx - North America (Registration Required) 📄 NEW	Capitaline AWS (Registration Required) 📄	CMIE First Source (Registration Required) 📄
CMIE Industry Outlook (Registration Required) 📄	CMIE PACE (Registration Required) 📄	CMIE Prowess dx (Registration Required) 📄
CMIE ProwessIQ (Registration Required) 📄	Compustat Executive Compensation (Execucomp) (Registration Required) 📄	Compustat North America (Registration Required) 📄
Corporate Social Responsibility	CRISIL Research (Registration Required) 📄 📺	CRSP Mutual Funds (Registration Required) 📄



PACE

Prowess Application for Credit Evaluation
Comprehensive Standardised Analysis

52,857 companies

Selected Company:
Infosys Ltd.

[Tabulations](#) | [Announcements](#) | [My Set of Companies](#)

Subscription till: 09 Mar 2023

Select Company

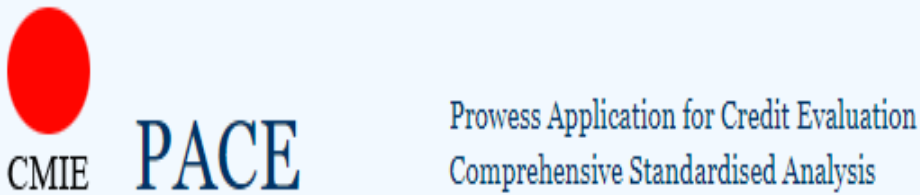
Infosys Ltd.

Annualise ☐ Exchange **BSE** Currency **Rs. Million**

Identity & Background	Credit Evaluation	Business Segments & Products
<ul style="list-style-type: none"> Company Classifications Company Identity Indicators 	<ul style="list-style-type: none"> CMIE Benchmark Report for Credit Evaluation 	<ul style="list-style-type: none"> Plant Locations Performance by Product Segments <ul style="list-style-type: none"> Annual - Profit & Loss Annual - Assets & Liabilities Interim - Quarterly Interim - Annual Performance by Geographic Segments <ul style="list-style-type: none"> Annual - Profit & Loss Annual - Assets & Liabilities Interim - Quarterly Interim - Annual Products Manufactured <ul style="list-style-type: none"> Product Details Trends in Capacity of Products Trends in Production of Products Trends in Capacity Utilisation Trends in Value of Products Sold Trends in Quantity of Products Sold Trends in Share of Products Sold to Total Income Raw Materials Consumed Shares of Indigenous & Imported Raw Material Energy Consumption Product-wise Energy Consumption
Interim Financial Statements	Summary Annual Financial Statements	
<ul style="list-style-type: none"> Interim Quarterly Performance Interim Quarterly Financial Ratios Interim Quarterly Balance Sheet Interim Quarterly Statements in SEBI Format Interim Annual Performance Interim Annual Financial Ratios Interim Annual Balance Sheet Interim Annual Balance Sheet Ratio Interim Annual Statements in SEBI Format 	<ul style="list-style-type: none"> Executive Summary Income & Expenditure Summary Balance Sheet Summary Cash Flow Summary 	
Ownership & Governance Reports	Financial Statements from Annual Reports	
<ul style="list-style-type: none"> Governance Reports <ul style="list-style-type: none"> Board of Directors & their Remuneration Recent Trends in Director's Remuneration Board Committees & Meetings Attended Board of Directors & Meetings Attended Composition of Board of Directors Board Meeting Dates & Purpose Ownership - Interim <ul style="list-style-type: none"> Ownership of Equity Shares & Number of Owners Recent Trends in Ownership of Equity Shares Major Owners of Equity Shares Shares Pledged by Major Owners Shares Pledged by Promoters Ownership - Annual <ul style="list-style-type: none"> Shareholding of Promoters Top 10 Shareholders Shareholding of Directors/KMP Subsidiaries Auditors 	<ul style="list-style-type: none"> Income & Expenditure <ul style="list-style-type: none"> Income Details Expense Details Profits & its Appropriation EPS as per AS-20 Liabilities <ul style="list-style-type: none"> Shareholder's Funds Long-term Liabilities <ul style="list-style-type: none"> Long-term Borrowings incl. Current Portion Long-term Borrowings excl. Current Portion Other Long term Liabilities & Provisions Current Liabilities & Provisions <ul style="list-style-type: none"> Short-term Borrowings Contingent Liabilities Assets <ul style="list-style-type: none"> Long-term Assets <ul style="list-style-type: none"> Fixed Assets Long-term Investments Long-term Loans and Advances Other Long-term Assets Charges on Assets Current Assets & Loans and Advances Schedule of Investments Interest in Joint Ventures as per AS-27 Discontinued Operations as per AS-24 	<ul style="list-style-type: none"> Financial Ratios and Growth Analysis <ul style="list-style-type: none"> Profitability Ratios Liquidity, Working Cycle & Turnover Ratios Net Working Capital-Cost of Sales method Distribution of Expenses Operating Expenses as Percent of Sales Sources of Growth in Income Sources of Growth in Profits Miscellaneous Reports <ul style="list-style-type: none"> Forex Transactions Compensation to Employees Contribution to Exchequer Rating of Credit Instruments by Rating Agencies Banking / NBFC Reports <ul style="list-style-type: none"> Maturity of Deposits & Advances Disclosures by Banks <ul style="list-style-type: none"> Statutory Disclosures by Banks <ul style="list-style-type: none"> CRAR, Ratios & Exposure to Sensitive Sectors NPA - Movement, Ratios & Divergence Sector-wise NPAs & advances Banking Disclosures - Basel II (Pillar 3) norms <ul style="list-style-type: none"> Capital Requirements for Risk Areas Capital Structure : Basel II(Pillar 3) Credit Risk : Basel II(Pillar 3) Securitisation : Basel II(Pillar 3) Risk due to Change in Interest Rates Banking Disclosures - Basel III (Pillar 3) norms <ul style="list-style-type: none"> Capital Requirement for Risk Areas - Basel III
	Assets/Liabilities Tabulations for Time Series	
	Total Liabilities	

Identity & Background		Credit Evaluation		Business Segments & Products	
<ul style="list-style-type: none">Company ClassificationsCompany Identity Indicators		<ul style="list-style-type: none">CMIE Benchmark Report for Credit Evaluation		<ul style="list-style-type: none">Plant LocationsPerformance by Product Segments<ul style="list-style-type: none">Annual - Profit & LossAnnual - Assets & LiabilitiesInterim - QuarterlyInterim - AnnualPerformance by Geographic Segments<ul style="list-style-type: none">Annual - Profit & LossAnnual - Assets & LiabilitiesInterim - QuarterlyInterim - AnnualProducts Manufactured<ul style="list-style-type: none">Product DetailsTrends in Capacity of ProductsTrends in Production of ProductsTrends in Capacity UtilisationTrends in Value of Products SoldTrends in Quantity of Products SoldTrends in Share of Products Sold to Total IncomeRaw Materials ConsumedShares of Indigenous & Imported Raw MaterialEnergy ConsumptionProduct-wise Energy Consumption	
Interim Financial Statements		Summary Annual Financial Statements			
<ul style="list-style-type: none">Interim Quarterly PerformanceInterim Quarterly Financial RatiosInterim Quarterly Balance SheetInterim Quarterly Statements in SEBI FormatInterim Annual PerformanceInterim Annual Financial RatiosInterim Annual Balance SheetInterim Annual Balance Sheet RatioInterim Annual Statements in SEBI Format		<ul style="list-style-type: none">Executive SummaryIncome & Expenditure SummaryBalance Sheet SummaryCash Flow Summary			
Ownership & Governance Reports		Financial Statements from Annual Reports			
<ul style="list-style-type: none">Governance Reports<ul style="list-style-type: none">Board of Directors & their RemunerationRecent Trends in Director's RemunerationBoard Committees & Meetings AttendedBoard of Directors & Meetings AttendedComposition of Board of DirectorsBoard Meeting Dates & PurposeOwnership - Interim<ul style="list-style-type: none">Ownership of Equity Shares & Number of OwnersRecent Trends in Ownership of Equity SharesMajor Owners of Equity SharesShares Pledged by Major OwnersShares Pledged by PromotersOwnership - Annual<ul style="list-style-type: none">Shareholding of PromotersTop 10 ShareholdersShareholding of Directors/KMPSubsidiariesAuditors		<ul style="list-style-type: none">Income & Expenditure<ul style="list-style-type: none">Income DetailsExpense DetailsProfits & its AppropriationEPS as per AS-20Liabilities<ul style="list-style-type: none">Shareholder's FundsLong-term Liabilities<ul style="list-style-type: none">Long-term Borrowings incl. Current PortionLong-term Borrowings excl. Current PortionOther Long term Liabilities & ProvisionsCurrent Liabilities & Provisions<ul style="list-style-type: none">Short-term BorrowingsContingent LiabilitiesAssets<ul style="list-style-type: none">Long-term Assets<ul style="list-style-type: none">Fixed AssetsLong-term InvestmentsLong-term Loans and AdvancesOther Long-term AssetsCharges on AssetsCurrent Assets & Loans and AdvancesSchedule of InvestmentsInterest in Joint Ventures as per AS-27Discontinued Operations as per AS-24		<ul style="list-style-type: none">Financial Ratios and Growth Analysis<ul style="list-style-type: none">Profitability RatiosLiquidity, Working Cycle & Turnover RatiosNet Working Capital-Cost of Sales methodDistribution of ExpensesOperating Expenses as Percent of SalesSources of Growth in IncomeSources of Growth in ProfitsMiscellaneous Reports<ul style="list-style-type: none">Forex TransactionsCompensation to EmployeesContribution to ExchequerRating of Credit Instruments by Rating AgenciesBanking / NBFC Reports<ul style="list-style-type: none">Maturity of Deposits & AdvancesDisclosures by Banks<ul style="list-style-type: none">Statutory Disclosures by Banks<ul style="list-style-type: none">CRAR, Ratios & Exposure to Sensitive SectorsNPA - Movement, Ratios & DivergenceSector-wise NPAs & advancesBanking Disclosures - Basel II (Pillar 3) norms<ul style="list-style-type: none">Capital Requirements for Risk AreasCapital Structure : Basel II(Pillar 3)Credit Risk : Basel II(Pillar 3)Securitisation : Basel II(Pillar 3)Risk due to Change in Interest RatesBanking Disclosures - Basel III (Pillar 3) norms<ul style="list-style-type: none">Capital Requirement for Risk Areas - Basel III	
				Securities Prices & Indicators	
				<ul style="list-style-type: none">Daily Prices and VolumesDaily Stock Indicators and RatiosValuation IndicatorsDebt Security PricesDebt Issue Summary	
				Capex, M&A Reports	
				<ul style="list-style-type: none">Capital Expenditure ProjectsMerger & Acquisition Deals	

Identity & Background



Tabulations | Announcements | My Set of Companies

Select Company Infosys Ltd.

Identity & Background

Company Classifications

Company Identity Indicators

Company Identity Indicators	
CMIE company code	100632
ROC regn. no.	08 - 13115
CIN code	L85110KA1981PLC013115
Entity type	Public Ltd.
Incorporation year	1981
ISIN code	INE009A01021
BSE scrip code	500209
BSE listing group	A
NSE symbol	INFY
Corporate office address	Electronics City, Hosur Road, Bengaluru 560100 Karnataka
Phone No.	+91 80 28520261
Registered office address	Electronics City, Hosur Road, Bengaluru 560100 Karnataka
Phone No.	+91 80 28520261
Fax No.	+91 80 28520362
Email address	askus@infosys.com
Head office address	Plot No.44, Electronics City, Hosur Road, Bengaluru 560100 Karnataka
Phone No.	+91 80 28520261
Fax No.	+91 80 28520362
Email address	infosys@infy.com

Alert | Home | My Profile | Feedback | Seek Clarifications | FAQs | Login | Welcome, ip-based-user-65a26761e46cfc

Company Identity Indicators



Company Classifications

Tabulations | Announcements | My Set of Companies

Select Company Infosys Ltd.

Annualise ☐ Exchange BSE Currency Rs. Million

54,588 companies

Selected Company:
Infosys Ltd.

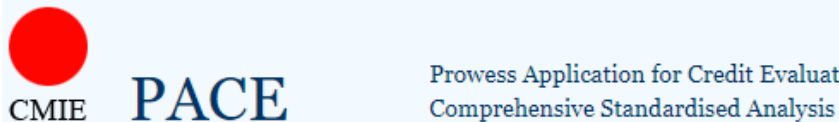
Subscription till: 09 Mar 2024

Infosys Ltd.

Company Classifications : Mar 2014 - Mar 2023 : Rs. Million

Classifications	Mar 2014	Mar 2015	Mar 2016	Mar 2017	Mar 2018	Mar 2019	Mar 2020	Mar 2021	Mar 2022	Mar 2023
§	12 mths	12 mths	12 mths	12 mths	12 mths	12 mths	12 mths	12 mths	12 mths	12 mths
Main product / service	Software services	Software services	Software services	Software services	Software services	Software services	Software services	Software services	Software services	Software services
Industry group	Computer software	Computer software	Computer software	Computer software	Computer software	Computer software	Computer software	Computer software	Computer software	Computer software
Ownership group	Infosys Group	Infosys Group	Infosys Group	Infosys Group	Infosys Group	Infosys Group	Infosys Group	Infosys Group	Infosys Group	Infosys Group
Age group										
Size group (all industries)	Top decile	Top decile	Top decile	Top decile	Top decile	Top decile	Top decile	Top decile	Top decile	Top decile
Size group (within industry)	Top decile	Top decile	Top decile	Top decile	Top decile	Top decile	Top decile	Top decile	Top decile	Top decile
Size	420,688.3	493,746.6	574,210.0	646,471.6	694,613.3	735,656.6	769,535.0	838,836.6	926,971.6	1,040,121.6

Interim Financial Statements



Tabulations | Announcements | My Set of Companies

Select Company Infosys Ltd.

Identity & Background

- Company Classifications
- Company Identity Indicators

Interim Financial Statements

- Interim Quarterly Performance
- Interim Quarterly Financial Ratios
- Interim Quarterly Balance Sheet
- Interim Quarterly Statements in SBI Format
- Interim Annual Performance
- Interim Annual Financial Ratios



Tabulations | Announcements | My Set of Companies

Select Company Infosys Ltd.

Standalone Values	Standalone Y-O-Y Growth	Standalone Q-O-Q Growth	Standalone Y-O-Y Indexed	Standalone Q-O-Q Indexed	Consolidated Values	Consolidated Y-O-Y Growth	Consolidated Q-O-Q Growth	Consolidated Y-O-Y Indexed	Consolidated Q-O-Q Indexed	Peer Comparison : Values	Peer Comparison : Y-O-Y Growth	Peer Comparison : Q-O-Q Growth	Peer Benchmark : Values	Peer Benchmark : Y-O-Y Growth	Industry Benchmark : Values	Industry Benchmark : Y-O-Y Growth
-------------------	-------------------------	-------------------------	--------------------------	--------------------------	---------------------	---------------------------	---------------------------	----------------------------	----------------------------	--------------------------	--------------------------------	--------------------------------	-------------------------	-------------------------------	-----------------------------	-----------------------------------

Infosys Ltd.

Interim Financial Performance (Quarterly) : Mar 2021 - Jun 2023 : Non-Annualised : Rs. Million

	Mar 2021	Jun 2021	Sep 2021	Dec 2021	Mar 2022	Jun 2022	Sep 2022	Dec 2022	Mar 2023	Jun 2023
₹	3 mths	3 mths	3 mths	3 mths	3 mths	3 mths	3 mths	3 mths	3 mths	3 mths
Total income from continuing operations	230,010.0	242,840.0	265,140.0	283,500.0	280,160.0	301,750.0	328,340.0	335,660.0	312,970.0	328,120.0
Net sales	224,970.0	237,140.0	254,620.0	273,370.0	274,260.0	295,270.0	315,670.0	323,890.0	305,310.0	318,110.0
Export income										
Other & extraordinary income	5,040.0	5,700.0	10,520.0	10,130.0	5,900.0	6,480.0	12,670.0	11,770.0	7,660.0	10,010.0
Other income	5,040.0	5,700.0	10,520.0	10,130.0	5,900.0	6,480.0	12,670.0	11,770.0	7,660.0	10,010.0
Profit on sale of investments										
Extraordinary income										
Profit on sale of assets										
Tax refunds										
Provisions written back										
Other extraordinary income										
Change in stock										
Total expenses	185,420.0	195,610.0	210,510.0	224,800.0	228,390.0	252,740.0	265,810.0	273,560.0	253,930.0	268,560.0
Operating expenses	163,500.0	171,830.0	185,780.0	198,970.0	204,570.0	225,960.0	236,240.0	245,170.0	225,830.0	238,770.0
Raw materials, etc & purch of fin gds										
Raw materials, stores & spares										
Purchase of finished goods										
Salaries and wages	115,320.0	121,910.0	127,340.0	132,750.0	134,640.0	149,140.0	158,730.0	163,950.0	155,810.0	163,530.0
VRS expenses										
Total other expenses	48,180.0	49,920.0	58,440.0	66,220.0	69,930.0	76,820.0	77,510.0	81,220.0	70,020.0	75,240.0
Power & fuel										

For Internal Use Only – Not For External Distribution

Interim Quarterly Financial Ratios



Standalone Values	Standalone Y-O-Y Growth	Standalone Q-O-Q Growth	Standalone Y-O-Y Indexed	Standalone Q-O-Q Indexed	Consolidated Values	Consolidated Y-O-Y Growth	Consolidated Q-O-Q Growth	Consolidated Y-O-Y Indexed	Consolidated Q-O-Q Indexed	Peer Comparison : Values	Peer Comparison : Y-O-Y Growth	Peer Comparison : Q-O-Q Growth	Peer Benchmark : Values	Peer Benchmark : Y-O-Y Growth	Industry Benchmark : Values	Industry Benchmark : Y-O-Y Growth
-------------------	-------------------------	-------------------------	--------------------------	--------------------------	---------------------	---------------------------	---------------------------	----------------------------	----------------------------	--------------------------	--------------------------------	--------------------------------	-------------------------	-------------------------------	-----------------------------	-----------------------------------

Infosys Ltd.

	Mar 2021	Jun 2021	Sep 2021	Dec 2021	Mar 2022	Jun 2022	Sep 2022	Dec 2022	Mar 2023	Jun 2023
₹	3 mths	3 mths	3 mths	3 mths	3 mths	3 mths	3 mths	3 mths	3 mths	3 mths
Total income from continuing operations	230,010.0	242,840.0	265,140.0	283,500.0	280,160.0	301,750.0	328,340.0	335,660.0	312,970.0	328,120.0
Net sales	224,970.0	237,140.0	254,620.0	273,370.0	274,260.0	295,270.0	315,670.0	323,890.0	305,310.0	318,110.0
Export income										
Other & extraordinary income	5,040.0	5,700.0	10,520.0	10,130.0	5,900.0	6,480.0	12,670.0	11,770.0	7,660.0	10,010.0
Other income	5,040.0	5,700.0	10,520.0	10,130.0	5,900.0	6,480.0	12,670.0	11,770.0	7,660.0	10,010.0
Profit on sale of investments										
Extraordinary income										
Profit on sale of assets										
Tax refunds										
Provisions written back										
Other extraordinary income										
Change in stock										
Total expenses	185,420.0	195,610.0	210,510.0	224,800.0	228,390.0	252,740.0	265,810.0	273,560.0	253,930.0	268,560.0
Operating expenses	163,500.0	171,830.0	185,780.0	198,970.0	204,570.0	225,960.0	236,240.0	245,170.0	225,830.0	238,770.0
Raw materials, etc & purch of fin gds										
Raw materials, stores & spares										
Purchase of finished goods										
Salaries and wages	115,320.0	121,910.0	127,340.0	132,750.0	134,640.0	149,140.0	158,730.0	163,950.0	155,810.0	163,530.0
VRS expenses										
Total other expenses	48,180.0	49,920.0	58,440.0	66,220.0	69,930.0	76,820.0	77,510.0	81,220.0	70,020.0	75,240.0
Power & fuel										

54,588 companies
Selected Company:
Infosys Ltd.

Ownership & Governance Reports

CMIE PACE Prowess Application for Credit Evaluation
Comprehensive Standardised Analysis

Tabulations | Announcements | My Set of Companies

Select Company Infosys Ltd.

Identity & Background

- Company Classifications
- Company Identity Indicators

Interim Financial Statements

- Interim Quarterly Performance
- Interim Quarterly Financial Ratios
- Interim Quarterly Balance Sheet
- Interim Quarterly Statements in SEBI Format
- Interim Annual Performance
- Interim Annual Financial Ratios
- Interim Annual Balance Sheet
- Interim Annual Balance Sheet Ratio
- Interim Annual Statements in SEBI Format

Ownership & Governance Reports

Governance Reports

- Board of Directors & their Remuneration
- Recent Trends in Director's Remuneration
- Board Committees & Meetings Attended
- Board of Directors & Meetings Attended
- Composition of Board of Directors
- Board Meeting Dates & Purpose

Ownership - Interim

- Ownership of Equity Shares & Number of Owners
- Recent Trends in Ownership of Equity Shares
- Major Owners of Equity Shares
- Shares Pledged by Major Owners
- Shares Pledged by Promoters

Ownership - Annual

- Shareholding of Promoters
- Top 10 Shareholders
- Shareholding of Directors/KMP

Subsidiaries

Auditors

CMIE PACE Prowess Application for Credit Evaluation
Comprehensive Standardised Analysis

Tabulations | Announcements | My Set of Companies

Select Company Infosys Ltd.

Alert | Home | My Profile | Feedback | Seek Clarifications | FAQs | Login | Welcome, ip-based user-6601f7e4f6dc

Subscription till: 09 Mar 2024

Annualise ☐ Exchange BSE ☐ Currency Ru. Million ☐

Board of Directors & their Remuneration

Infosys Ltd.

Board of Directors & their Remuneration : Mar 2023 : Indian Rupee

Directors	Designation	Date of appointment/ resignation	Salary	Sitting fees	Bonus/ commission	Perquisites	Retirement benefits	Total remuneration	Committee positions held (nos.)	Board meetings attended (nos.)	Last AGN attended	Directorships held in other companies (nos.)	
Nandan M Nilekani	Chairperson	R: 24 Jun 2022							0	7	Y	1	
Salil Parekh	Managing Director & Chief Executive Officer	R: 30 Jun 2022	66,700,000		187,300,000	306,000,000	4,500,000	564,500,000	0	7	Y	1	
Kiran Mazumdar Shaw	Director	R: 22 Mar 2023			24,500,000			24,500,000		7	Y		
D Sundaram	Director	R: 13 Jul 2022			26,700,000			26,700,000		7	Y	3	
Michael Gibbs	Director				26,300,000			26,300,000		3	8	Y	1
Uri Levine	Director				23,700,000			23,700,000		0	8	Y	1
Bobby Kamubhai Parikh	Director				20,200,000			20,200,000		11	8	Y	3
Chitra Nayak	Director				25,400,000			25,400,000		1	8	Y	1
Govind Iyer	Director	A: 12 Jan 2023			4,900,000			4,900,000		0	2		1
Helene Auriol	Additional Director	A: 26 May 2023											

Recent Trends in Director's Remuneration

Infosys Ltd.
Recent Trends in Director's Remuneration : Mar 2014 - Mar 2023 : Indian Rupee

Directors	Mar 2014	Mar 2015	Mar 2016	Mar 2017	Mar 2018	Mar 2019	Mar 2020	Mar 2021	Mar 2022	Mar 2023
Nandan M Nilekani										
Salil Parekh					39,800,000	246,700,000	242,700,000	496,800,000	710,240,274	564,500,000
Kiran Mazumdar Shaw	1,000,000	7,600,000	8,700,000	8,900,000	10,000,000	10,400,000	11,300,000	11,000,000	21,080,002	24,500,000
D Sundaram					7,000,000	10,400,000	12,400,000	12,000,000	22,080,845	26,700,000
Michael Gibbs						7,500,000	13,600,000	10,200,000	18,669,257	26,300,000
Urfi Levine								7,700,000	16,123,544	23,700,000
Bobby Kamubhai Parikh								6,900,000	16,594,513	20,200,000
Chitra Nayak								100,000	17,126,464	25,400,000
Govind Iyer										4,900,000
Helene Auriol										
U B Previn Rao	8,300,000	60,800,000	92,800,000	78,000,000	92,200,000	90,500,000	106,000,000	173,300,000		
Punith Kumar-Sinha (Dr.)			2,000,000	12,200,000	13,300,000	15,000,000	17,400,000	9,000,000		
D N Prahlad				3,600,000	9,500,000	9,600,000	10,600,000	800,000		
Roopo Kudva		1,100,000	9,900,000	10,000,000	9,700,000	10,300,000	9,900,000			
Ravi Venkatesan	8,200,000	8,400,000	10,400,000	10,400,000	14,300,000	1,400,000				
R Seshasayee	8,100,000	10,300,000	18,400,000	19,500,000	8,400,000					
Vishal Sikka (Dr.)		45,600,000	487,300,000	160,100,000	129,200,000					
Jeffrey Lehman	11,300,000	12,000,000	13,300,000	13,700,000	8,900,000					
John W Etchemendy (Prof.)		2,300,000	10,500,000	11,000,000	6,000,000					
Carol M Browner		8,500,000	6,800,000							
K V Kamath	16,300,000	19,700,000	3,900,000							
Narayana Murthy										
S Gopalakrishnan	1,600,000									
S D Shibulal	1,600,000									
Srinath Batra	23,300,000	18,800,000								

Capital History

Capital History

- Capital History Summary
- Changes in Equity Capital
- Capital raised through Debt Instruments
- Dividends
- Bonus Issues
- RBI Approvals for ECB

CMIE PACE

Prowess Application for Credit Evaluation
Comprehensive Standardised Analysis

Alert | Home | My Profile | P

Tabulations | Announcements | My Set of Companies

Select Company

Infosys Ltd.

Changes in Equity Capital : 31 Mar 1993 - 14 Sep 2023 : Rs. Million

Issue date	Issue type	Face value	Premium per equity	Security amount	Paidup capital		No. of Shares	
					Added / Reduced	Outstanding	Added / Reduced	Outstanding
14 Sep 2023	ESOP	5.00			0.1	20,751.9	26,268	4,150,384,120
09 Aug 2023	ESOP	5.00			0.0	20,751.7	12,173	4,150,357,852
01 Aug 2023	ESOP	5.00			0.7	20,751.7	153,314	4,150,345,679
13 Jun 2023	ESOP	5.00			1.5	20,750.9	317,673	4,150,192,365
12 May 2023	ESOP	5.00			2.5	20,749.3	511,862	4,149,874,692
02 May 2023	ESOP	5.00			2.6	20,746.8	529,658	4,149,362,830
13 Apr 2023	ESOP	5.00			1.3	20,744.1	273,128	4,148,833,172
10 Mar 2023	ESOP	5.00			4.5	20,742.8	905,549	4,148,560,044
10 Feb 2023	Buyback	5.00	1,605.33		-1.6	20,738.2	-321,848	4,147,654,495
09 Feb 2023	Buyback	5.00	1,597.18		-2.9	20,739.8	-580,000	4,147,976,343
08 Feb 2023	Buyback	5.00	1,590.14		-4.3	20,742.7	-874,000	4,148,556,343
07 Feb 2023	Buyback	5.00	1,563.99		-4.4	20,747.1	-888,500	4,149,430,343
06 Feb 2023	Buyback	5.00	1,566.27		-5.9	20,751.5	-1,183,500	4,150,318,843
03 Feb 2023	Buyback	5.00	1,582.69		-8.6	20,757.5	-1,736,000	4,151,502,343
02 Feb 2023	Buyback	5.00	1,572.49		-8.6	20,766.1	-1,736,000	4,153,238,343
01 Feb 2023	Buyback	5.00	1,535.53		-8.6	20,774.8	-1,736,000	4,154,974,343
31 Jan 2023	Buyback	5.00	1,518.19		-8.6	20,783.5	-1,736,000	4,156,710,343
30 Jan 2023	Buyback	5.00	1,528.86		-8.6	20,792.2	-1,736,000	4,158,446,343
27 Jan 2023	Buyback	5.00	1,535.13		-8.3	20,800.9	-1,674,000	4,160,182,343
25 Jan 2023	Buyback	5.00	1,542.78		-8.3	20,809.2	-1,674,000	4,161,856,343
24 Jan 2023	Buyback	5.00	1,556.15		-8.3	20,817.6	-1,674,000	4,163,530,343

CMIE PACE

Prowess Application for Credit Evaluation
Comprehensive Standardised Analysis

Tabulations | Announcements | My Set of Companies

Select Company

Infosys Ltd.

Capital History Summary : 31 Mar 1993 - 14 Sep 2023 : Rs. Million

Issue date	Issue type	Security type	Issue price	Securities		Outstanding	
				Nos	Amount	No. of shares	Paid up capital
14 Sep 2023	ESOP	Equity shares	5.00	26,268	0.1	4,150,384,120	20,751.9
09 Aug 2023	ESOP	Equity shares	5.00	12,173		4,150,357,852	20,751.7
01 Aug 2023	ESOP	Equity shares	5.00	153,314	0.7	4,150,345,679	20,751.7
13 Jun 2023	ESOP	Equity shares	5.00	317,673	1.5	4,150,192,365	20,750.9
12 May 2023	ESOP	Equity shares	5.00	511,862	2.5	4,149,874,692	20,749.3
02 May 2023	ESOP	Equity shares	5.00	529,658	2.6	4,149,362,830	20,746.8
13 Apr 2023	ESOP	Equity shares	5.00	273,128	1.3	4,148,833,172	20,744.1
10 Mar 2023	ESOP	Equity shares	5.00	905,549	4.5	4,148,560,044	20,742.8
10 Feb 2023	Buyback	Equity shares	1,610.33	-321,848		4,147,654,495	20,738.2
09 Feb 2023	Buyback	Equity shares	1,602.18	-580,000		4,147,976,343	20,739.8
08 Feb 2023	Buyback	Equity shares	1,595.14	-874,000		4,148,556,343	20,742.7
07 Feb 2023	Buyback	Equity shares	1,568.99	-888,500		4,149,430,343	20,747.1
06 Feb 2023	Buyback	Equity shares	1,571.27	-1,183,500		4,150,318,843	20,751.5
03 Feb 2023	Buyback	Equity shares	1,587.69	-1,736,000		4,151,502,343	20,757.5
02 Feb 2023	Buyback	Equity shares	1,577.49	-1,736,000		4,153,238,343	20,766.1
01 Feb 2023	Buyback	Equity shares	1,540.53	-1,736,000		4,154,974,343	20,774.8
31 Jan 2023	Buyback	Equity shares	1,523.19	-1,736,000		4,156,710,343	20,783.5
30 Jan 2023	Buyback	Equity shares	1,533.86	-1,736,000		4,158,446,343	20,792.2
27 Jan 2023	Buyback	Equity shares	1,531.13	-1,674,000		4,160,182,343	20,800.9
25 Jan 2023	Buyback	Equity shares	1,547.78	-1,674,000		4,161,856,343	20,809.2
24 Jan 2023	Buyback	Equity shares	1,561.15	-1,674,000		4,163,530,343	20,817.6
23 Jan 2023	Buyback	Equity shares	1,542.75	-1,674,000		4,165,204,343	20,826.0
20 Jan 2023	Buyback	Equity shares	1,532.57	-1,703,000		4,166,878,343	20,834.3


Credit Evaluation

Tabulations | Announcements | My Set of Companies

Select Company

Infosys Ltd.

Identity & Background

 Company Classifications

Credit Evaluation


 CMIE Benchmark Report for Credit Evaluation

CMIE Benchmark Report for Credit Evaluation

Tabulations | Announcements | My Set of Companies

Select Company

Infosys Ltd.

          A+ A A-

Infosys Ltd.

CMIE Benchmark Report for Credit Evaluation : Annualised : Mar 2021 - Mar 2023 : Rs. Million

	Norms	Mar 2021	Mar 2022	Mar 2023
₹	₹	12 mths	12 mths	12 mths
Liquidity (times)				
Quick ratio	> 1 times	2.697	2.044	1.820
Current ratio	> 2 times	2.706	2.053	1.828
Cash to current liabilities	> = Industry# avg	1.217	0.790	0.479
Industry average of cash to current liabilities		1.112	1.026	0.977
Cash to average cost of sales	> = Industry# avg	102.733	80.564	44.751
Industry average cash to average cost of sales		80.413	73.025	44.484
Solvency (times)				
Debt to equity ratio	< 3 times	0.054	0.055	0.063
Total outside liabilities / tangible net worth	< 3 times	0.332	0.458	0.527
Total term liabilities / tangible net worth	< 2 times	0.047	0.047	0.053
Net working capital cycle (days)		21.7	24.3	22.1
Interest cover / incidence				
Interest cover (times)	> 2 times	196.816	227.151	210.556
Interest incidence (%)	< = avg of non-fin sector excl petro	3.6	3.3	3.8
Avg interest incidence of non-fin sector excl petro (%)		7.9	7.4	7.6
Interest incidence (short term) (%)	< = avg non-fin sector excl petro	0.0	0.0	0.0

For Internal Use Only – Not For External Distribution

[Alert](#) | [Home](#) | [My Profile](#) | [Feedback](#) |



PACE

Prowess Application for Credit Evaluation

Comprehensive Standardised Analysis

[Tabulations](#) | [Announcements](#) | [My Set of Companies](#)

Select Company Infosys Ltd.

Identity & Background

- ❓ Company Classifications
- ❓ Company Identity Indicators

Interim Financial Statements

- ② Interim Quarterly Performance
- ② Interim Quarterly Financial Ratios
- ② Interim Quarterly Balance Sheet
- ② Interim Quarterly Statements in SEBI Format
- ② Interim Annual Performance

Credit Evaluation

- CMIE Benchmark Report for Credit Evaluation

Summary Annual Financial Statements

- Executive Summary
- Income & Expense Summary

Financial Statements from Annual Reports

- Income & Expense
- Income Details
- Expense Details

- ### Balance Sheet Summary

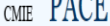
- ## ❓ Cash Flow Summary

Financial Ratios and Growth Analysis

- Profitability Ratios
- Liquidity, Working Cycle & Turnover Ratios

[Alert](#) | [Home](#) | [My Profile](#) | [Feedback](#) | [Seek Clax](#)

Executive Summary



Prowess Application for Credit Evaluation
Comprehensive Standardised Analysis

[Tabulations](#) | [Announcements](#) | [My Set of Companies](#)

Select Company

Standalone Values Standalone Y-O-Y Growth Standalone Y-O-

Infosys Ltd.

Executive Summary : Mar 2014 - Mar 2023 : Non-Annualised : Rs. Million

	Mar 2014	Mar 2015	Mar 2016	Mar 2017	Mar 2018	Mar 2019	Mar 2020	Mar 2021	Mar 2022	Mar 2023
	12 mths	12 mths	12 mths	12 mths	12 mths	12 mths	12 mths	12 mths	12 mths	12 mths
\$	I GAAP	I GAAP	I NDAS	I NDAS	I NDAS	I NDAS	I NDAS	I NDAS	I NDAS	I NDAS
Total income	469,360.0	512,100.0	573,650.0	628,930.0	663,340.0	759,650.0	822,750.0	888,560.0	1,074,140.0	1,285,200.0
Sales	443,580.0	473,400.0	540,340.0	593,540.0	620,080.0	731,700.0	791,050.0	859,120.0	1,039,400.0	1,240,140.0
Income from financial services	25,500.0	32,730.0	27,300.0	32,150.0	36,610.0	24,990.0	27,870.0	25,030.0	30,390.0	41,310.0
Change in stock										
Total expenses	367,420.0	390,460.0	446,720.0	490,750.0	501,790.0	612,630.0	667,320.0	709,080.0	861,790.0	1,052,520.0
Raw materials, stores & spares	210.0	390.0	280.0	310.0	220.0	330.0	320.0	220.0	290.0	230.0
Power, fuel & water charges	1,810.0	1,850.0	1,790.0	1,800.0	1,620.0	1,710.0	1,760.0	990.0	930.0	1,550.0
Compensation to employees	243,500.0	251,150.0	282,070.0	309,440.0	324,720.0	382,960.0	424,340.0	451,790.0	516,640.0	627,640.0
Interest expenses							1,140.0	1,250.0	1,260.0	1,510.0
Depreciation	11,010.0	9,130.0	11,150.0	13,310.0	14,080.0	15,990.0	21,440.0	23,210.0	24,290.0	27,530.0

CMIL FYCE

Prowess Application for Credit Evaluation
Comprehensive Standardised Analysis

[Tabulations](#) | [Announcements](#) | [My Set of Companies](#)

Select Company

Standalone Values Standalone Y-O-Y Growth Standalone Y-O-Y Indexed Consolidated Values Consolidated Y-O-Y Growth Consolidated Y-O-Y Indexed Peer Comparison : Values Peer Comparison : Growth Peer Benchmark : Values Peer Benchmark : Growth Industry

Infosys Ltd.

Balance Sheet Summary : Mar 2014 - Mar 2023 : Non-Annualised : Rs. Million

[illegible]

For Internal Use Only – Not For External Distribution

Financial Statements from Annual Reports

Financial Statements from Annual Reports

Income & Expenditure

- ? Income Details
- ? Expense Details
- ? Profit & its Appropriation
- ? EPS as per AS-20
- ? Liabilities
 - ? Shareholder's Funds
 - ? Long-term Liabilities
 - ? Long-term Borrowings incl. Current Portion
 - ? Long-term Borrowings excl. Current Portion
 - ? Other Long term Liabilities & Provisions
 - ? Current Liabilities & Provisions
 - ? Short-term Borrowings
 - ? Contingent Liabilities
- ? Assets
 - ? Long-term Assets
 - ? Fixed Assets

Financial Ratios and Growth Analysis

- ? Profitability Ratios
- ? Liquidity, Working Cycle & Turnover Ratios
- ? Net Working Capital-Cost of Sales method
- ? Distribution of Expenses
- ? Operating Expenses as Percent of Sales
- ? Sources of Growth in Income
- ? Sources of Growth in Profits

Miscellaneous Reports

- ? Forex Transactions
- ? Compensation to Employees
- ? Contribution to Exchequer
- ? Rating of Credit Instruments by Rating Agencies

Banking / NBFC Reports

- ? Maturity of Deposits & Advances

Disclosures by Banks

Statutory Disclosures by Banks

- ? CRAR, Ratios & Exposure to Sensitive Sectors

CMIE PACE

Proven Application for Credit Evaluation
Comprehensive Standardized Analysis

Income Details

Infosys Ltd.										
Income Details : Mar 2014 - Mar 2023 : Non-Annualised : Rs. Million										
	Mar 2014	Mar 2015	Mar 2016	Mar 2017	Mar 2018	Mar 2019	Mar 2020	Mar 2021	Mar 2022	Mar 2023
	12 mths	12 mths	12 mths	12 mths	12 mths	12 mths	12 mths	12 mths	12 mths	12 mths
₹	1GAAP	1GAAP	1NDAS	1NDAS	1NDAS	1NDAS	1NDAS	1NDAS	1NDAS	1NDAS
Total Income	469,360.0	512,100.0	573,650.0	628,930.0	663,340.0	759,650.0	822,750.0	889,560.0	1,074,140.0	1,285,200.0
Sales	443,580.0	473,400.0	540,340.0	593,540.0	620,080.0	731,700.0	791,050.0	859,120.0	1,039,400.0	1,240,140.0
Industrial sales										
Sale of goods										
Sale of scrap										
Sale of raw materials and stores										
Job-work income										
Income from repairs & maintenance										
Construction income										
Sale of electricity, gas and water										
Fiscal benefits										
Other industrial sales										
Income from non-financial services	443,580.0	473,400.0	540,340.0	593,540.0	620,080.0	731,700.0	791,050.0	859,120.0	1,039,400.0	1,240,140.0
Trading income										
Rent income	170.0	400.0	510.0	650.0	670.0	630.0	580.0			
Income from financial services	25,500.0	32,730.0	27,300.0	32,150.0	36,610.0	24,990.0	27,870.0	25,030.0	30,390.0	41,310.0
Fee based financial services income										

CMIE PACE

Proven Application for Credit Evaluation
Comprehensive Standardized Analysis

Expense Details

Infosys Ltd.										
Expense Details : Mar 2014 - Mar 2023 : Non-Annualised : Rs. Million										
	Mar 2014	Mar 2015	Mar 2016	Mar 2017	Mar 2018	Mar 2019	Mar 2020	Mar 2021	Mar 2022	Mar 2023
	12 mths	12 mths	12 mths	12 mths	12 mths	12 mths	12 mths	12 mths	12 mths	12 mths
₹	1GAAP	1GAAP	1NDAS	1NDAS	1NDAS	1NDAS	1NDAS	1NDAS	1NDAS	1NDAS
Total expenses	367,420.0	390,460.0	446,720.0	490,750.0	501,790.0	612,630.0	667,320.0	709,080.0	861,790.0	1,052,520.0
Operating expenses	314,540.0	329,660.0	381,700.0	419,420.0	440,310.0	535,210.0	588,750.0	613,030.0	759,950.0	931,370.0
Raw material expenses	210.0	390.0	280.0	310.0	220.0	330.0	320.0	220.0	290.0	230.0
Raw materials, stores & spares										
Stores, spares, tools consumed	210.0	390.0	280.0	310.0	220.0	330.0	320.0	220.0	290.0	230.0
Purchase of finished goods										
Packaging and packing expenses										
Power, fuel & water charges	1,810.0	1,850.0	1,790.0	1,800.0	1,620.0	1,710.0	1,760.0	990.0	930.0	1,550.0
Compensation to employees	243,500.0	251,150.0	282,070.0	309,440.0	324,730.0	382,940.0	424,340.0	451,790.0	516,440.0	627,640.0
Salaries & wages	235,630.0	241,670.0	272,220.0	296,600.0	316,320.0	372,020.0	411,840.0	437,680.0	496,570.0	603,160.0
Indirect taxes	890.0	1,080.0	990.0	1,180.0	1,160.0	1,100.0	1,430.0	1,920.0	2,050.0	2,170.0
Excise duty										
Royalties, technical know-how fees, etc			2,290.0	2,760.0	2,470.0	4,060.0	4,410.0	2,880.0	4,440.0	7,560.0
Rent & lease rent	1,770.0	1,580.0	2,840.0	3,280.0	3,390.0	370.0	240.0	120.0	220.0	
Repairs & maintenance	4,860.0	6,340.0	6,730.0	10,730.0	9,020.0	10,510.0	11,960.0	10,500.0	8,240.0	9,220.0
Insurance premium paid	340.0	420.0	460.0	450.0	470.0	550.0	720.0	1,060.0	1,350.0	1,400.0
Outsourced manufacturing jobs										

For Internal Use Only – Not For External Distribution

Images of Annual Reports of Infosys Ltd.

Mar-2023	Mar-2022	Mar-2021	Mar-2020	Mar-2019	Mar-2018
Mar-2017	Mar-2016	Mar-2015	Mar-2014	Click on years to download the Annual Report	

Images of Interim Financial Statements of Infosys Ltd.

Jun-2023	Mar-2023	Dec-2022	Sep-2022	Jun-2022	Mar-2022
Dec-2021	Sep-2021	Jun-2021	Mar-2021		

Images of Rating Rationale of Infosys Ltd.

CRISIL - 04 Jul 2023	CRISIL - 20 Jul 2022	CRISIL - 23 Nov 2021	CRISIL - 05 Jan 2021
CRISIL - 21 Jan 2020	CRISIL - 25 Oct 2019	CRISIL - 29 Jun 2018	CRISIL - 27 Jun 2017
CRISIL - 29 Jun 2016	CRISIL - 14 Aug 2015	CRISIL - 26 Feb 2014	

Images of Call Transcripts of Infosys Ltd.

Jun-2023	Mar-2023	Dec-2022	Sep-2022
----------	----------	----------	----------

Images of Equity Research Reports



CRISIL Rating Rationale Report

CRISIL
Ratings

Rating Rationale

July 04, 2023 | Mumbai

Infosys Limited

Ratings reaffirmed at 'CRISIL AAA / Stable / CRISIL A1+ '

Rating Action

Long Term Debt	CRISIL AAA/Stable (Reaffirmed)
Commercial Paper	CRISIL A1+ (Reaffirmed)

Note: None of the Directors on CRISIL Ratings Limited's Board are members of rating committee and thus do not participate in discussion or assignment of any ratings. The Board of Directors also does not discuss any ratings at its meetings.
1 crore = 10 million
Refer to Annexure for Details of Instruments & Bank Facilities

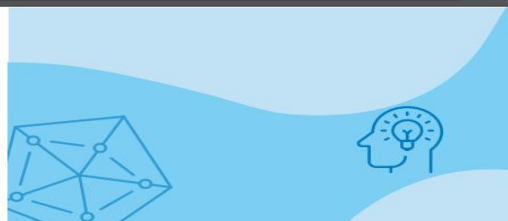
Detailed Rationale

CRISIL Ratings has reaffirmed its 'CRISIL AAA/Stable/CRISIL A1+' ratings on the long-term debt programme and commercial paper programme of Infosys Limited (Infosys).

The company registered second consecutive year of ~21% rupee revenue growth in fiscal 2023 (15.4% in constant currency (CC) in fiscal 2023), driven by growth from all end-user segments mainly manufacturing (43% y/y growth in fiscal 2023), Energy, Utilities, Resources and Services (28%), retail (20%), Communication (19%), and Financial services (12%). EBITDA (Earnings Before profit interest, tax, depreciation and amortisation) remained healthy at 24.8% in fiscal 2024, though moderated by 130 basis points due to high employee costs with continuing supply side constraints.

Macroeconomic headwinds in key markets of the US and Europe and end-user verticals (viz Financial services, retail etc.) is expected to result in CC revenue growth moderating to 4-7% in fiscal 2024 with EBIT margin remaining in 20-22% levels. This is supported by its strong market position and continuing deal wins and high share of digital offerings while maintaining high employee utilization levels and moderating attrition rates. Over the medium term, revenue and operating margin is likely to be supported by demand for IT services given the criticality of offerings through a host of services including process digitisation, migration to cloud-based technologies, workplace transformation, business model transformation and enhanced cybersecurity controls.

The ratings continue to reflect Infosys' leading position in the Indian information technology (IT) services space, its large scale of operations and healthy operating efficiency, strong financial risk profile with a debt-free balance sheet and robust liquid surplus of Rs ~34,000 crore as on March 31, 2023. These strengths are partially offset by exposure to intense competition in the global IT industry.



For Internal Use Only – Not For External Distribution

Business Segments & Products

Business Segments & Products

Plant Locations

Performance by Product Segments

Annual - Profit & Loss

Annual - Assets & Liabilities

Interim - Quarterly

Interim - Annual

Performance by Geographic Segments

Annual - Profit & Loss

Annual - Assets & Liabilities

Interim - Quarterly

Interim - Annual

Products Manufactured

Product Details

Trends in Capacity of Products

Trends in Production of Products

Trends in Capacity Utilisation

Trends in Value of Products Sold

Trends in Quantity of Products Sold

Trends in Share of Products Sold to Total Income

Raw Materials Consumed

Shares of Indigenous & Imported Raw Material

Energy Consumption

Product-wise Energy Consumption



Plant Locations

Prowess Application for Credit Evaluation
Comprehensive Standardised Analysis

Tabulations | Announcements | My Set of Companies

Select Company

Infosys Ltd.

Infosys Ltd.

Plant Locations : Mar 2014

Location	District	State	Product
Chennai	Chennai	Tamil Nadu	Software Development Services
Thiruvananthapuram	Thiruvananthapuram	Kerala	Software Development Services

CMIE PACE Prowess Application for Credit Evaluation
Comprehensive Standardised Analysis

Annual - Profit & Loss

Tabulations | Announcements | My Set of Companies

Select Company

Infosys Ltd.

Annual Exchange BSE

Standard Values Standard Y-o-Y Growth Consolidated Values Consolidated Y-o-Y Growth

Infosys Ltd.

Annual Performance by Product Segments - Profit & Loss : Mar 2009 - Mar 2018 : Non-Annualised : Rs. Million

Indicators / Segments	Mar 2009	Mar 2010	Mar 2011	Mar 2012	Mar 2013	Mar 2014	Mar 2015	Mar 2016	Mar 2017	Mar 2018
₹	12 mths	12 mths	12 mths	12 mths	12 mths	12 mths	12 mths	12 mths	12 mths	12 mths
Segment sales	202,640.0	211,400.0	253,850.0	312,540.0	367,650.0	443,410.0	473,000.0	539,830.0	592,890.0	619,410.0
All Other Segments										
Energy Utilities And Telecommunication Services			59,480.0	65,720.0	75,060.0	88,620.0	97,560.0	109,970.0	139,990.0	154,570.0
Financial Services	70,200.0	73,540.0							157,350.0	158,600.0
Financial Services And Insurance			92,930.0	111,720.0	127,750.0	153,740.0	161,750.0	177,910.0		
Hi-Tech									49,010.0	47,820.0
Life Sciences & Healthcare Enterprise					20,150.0	25,650.0	27,700.0	36,070.0	70,650.0	78,250.0
Manufacturing	38,760.0	39,880.0	46,860.0	61,170.0	76,570.0	94,340.0	102,300.0	120,870.0	60,860.0	64,850.0
Others	32,190.0	35,750.0								
Retail	26,990.0	29,890.0								
Retail, Consumer Packaged Goods & Logistics Enterprise					68,120.0	81,060.0	83,690.0	95,010.0	102,800.0	102,470.0
Retail, Logistics, Consumer Product Group, Life Sciences And Health Care Enterprise			54,580.0	73,930.0						
Telecom	34,500.0	32,340.0								
Net sales	202,640.0	211,400.0	253,850.0	312,540.0	367,650.0	443,410.0	473,000.0	539,830.0	592,890.0	619,410.0
All Other Comments									17,720.0	17,850.0

Securities Prices & Indicators

Securities Prices & Indicators

- 🔍 Daily Prices and Volumes
- 🔍 Daily Stock Indicators and Ratios
- 🔍 Valuation Indicators
- 🔍 Debt Security Prices
- 🔍 Debt Issue Summary

Capex, M&A Reports

- 🔍 Capital Expenditure Projects
- 🔍 Merger & Acquisition Deals
 - 🔍 Merger & Acquisition Summary
 - 🔍 Sale of Asset
 - 🔍 Acquisition of Shares
 - 🔍 Mergers

Announcements

- 20 Aug 2018 17:11 PM
Peer comparison and benchmarking reports to be updated continuously
- 16 Jul 2018 12:05 PM
Five new tabulations added in PACE
- 14 Jun 2017 12:46 PM
Interim annual balance sheet ratio report added in PACE

more..

CMIE PACE Proven Application for Credit Evaluation Comprehensive Standardized Analysis

Tabulations | Announcements | My Set of Companies

Select Company

🔍 📅 📊 📈 📉 📊 📈 📉 📊 📈 📉

Infosys Ltd.
Daily Prices and Volumes on BSE : 17 Jul 2023 - 11 Oct 2023 : Indian Rupee

Date	Opening	High	Low	Closing	Flag	Trans- actions	Shares traded	Turnover	Weighted avg. price	Shares deliverable		
₹	₹	₹	₹	₹	₹	(Nos.)	(Nos.)	(Rs. Million)	₹	(Nos.)	(Rs. Million)	(% of traded)
11 Oct 2023	1,497.00	1,518.50	1,481.80	1,493.65		8,047	1,642,200	2,459.6615	1,496.87	0	0.00	0.00
10 Oct 2023	1,482.00	1,497.00	1,469.00	1,495.00		4,988	131,128	195.3201	1,489.54	62,474	93.40	47.64
09 Oct 2023	1,459.05	1,491.00	1,459.05	1,474.60		10,819	167,685	248.2348	1,480.36	77,646	114.50	46.30
06 Oct 2023	1,467.80	1,484.20	1,463.50	1,478.55		26,339	500,258	738.5553	1,476.35	181,220	267.94	36.23
05 Oct 2023	1,452.10	1,474.95	1,452.10	1,462.45		15,896	341,800	500.3684	1,463.92	174,844	255.70	51.15
04 Oct 2023	1,427.95	1,449.00	1,418.40	1,445.25		8,624	233,556	334.1160	1,430.58	181,379	262.14	77.66
03 Oct 2023	1,435.10	1,437.75	1,420.50	1,433.60		5,511	117,423	168.0321	1,431.00	76,389	109.51	65.05
29 Sep 2023	1,434.95	1,447.00	1,416.00	1,435.05		22,779	277,715	397.5483	1,431.50	117,930	169.24	42.46
28 Sep 2023	1,468.40	1,472.35	1,435.20	1,439.50		17,412	187,971	272.3825	1,449.07	84,781	122.04	45.10
27 Sep 2023	1,456.40	1,469.40	1,450.00	1,467.55		9,622	262,035	383.3433	1,462.95	219,367	321.93	83.72
26 Sep 2023	1,478.35	1,480.00	1,458.70	1,460.05		13,965	218,275	319.9969	1,466.03	126,862	185.22	58.12
25 Sep 2023	1,494.95	1,494.95	1,471.65	1,474.75		13,113	438,533	649.1182	1,480.20	355,281	523.95	81.02
22 Sep 2023	1,494.35	1,506.70	1,485.90	1,496.00		21,929	411,402	617.1038	1,500.00	250,511	374.76	60.89

CMIE PACE Proven Application for Credit Evaluation Comprehensive Standardized Analysis

Tabulations | Announcements | My Set of Companies

Select Company

🔍 📅 📊 📈 📉 📊 📈 📉 📊 📈 📉

Infosys Ltd.
Capital Expenditure - Projects : Cost in Rs. Million

Project name	Cost	Status	Industry Group	Product / Location Information
Noida IT/ITES SEZ Project	4,830.0	Under Implementation	Computer software	Product IT SEZ Location Sector-85, noida
Rajarhat Software Development Centre Project	10,000.0	Under Implementation	Computer software	Product Computer Software Development Centre Phase 1 Regional Office Building Location Rajarhat
Hohali IT Campus Project		Under Implementation	Computer software	Product IT Campus Phase 1 Location Hohali
Nagpur (MIHAN) IT Campus Project	4,600.0	Under Implementation	Computer software	Product IT Campus

CMIE PACE Proven Application for Credit Evaluation Comprehensive Standardized Analysis

Tabulations | Announcements | My Set of Companies

20 Aug 2018 17:11 PM, Announcements

Peer comparison and benchmarking reports to be updated continuously

The Proven database is updated continuously. As a result, the sample of companies for which data is available for a particular year keeps changing every day. The changes in updates are large for recent years and negligible for earlier years. PACE presents tabulations that automatically compare a company's performance with its peers, with peer benchmarks and with industry aggregates. In light of the above-mentioned continuous updates, the challenge is when to generate the peer sets, peer benchmarks and the industry aggregates. The options are to either wait for the full set of peers and industry to get aggregated with complete data or to create these as and when the data keeps flowing. The former is a purist approach but, it delays results. The latter works in favour of providing some information rather than no information. Our approach hitherto, has been purist. We generated the peer comparisons, peer benchmarks and industry aggregates only when sufficient data was available for all industries. Users have suggested that in business decision making such a purist approach can be counter productive. By the time the information becomes available, its relevance is reduced substantially. It is important to give higher weight to being timely in business applications. In deference to this view we have decided to make changes to PACE. Now, peer comparisons, peer benchmark and industry aggregates will get generated as soon as the company's data becomes available. We will not wait for all data of all industries to be similarly updated. If the latest year's data is not available then, the preceding year's data will be shown instead of not showing anything. The peer comparison, peer benchmark and industry benchmark reports get updated on a progressive basis as and when new information flows in. It keeps replacing old data with new updated data. The progressive updates implies that initially the peer benchmark and industry aggregate will not be representative. In such cases the values will be displayed in red to distinguish them from other values which are always printed in black. Once the aggregates become representative (because of regular updates), the red values will turn to black. The industry benchmark reports displays three years of the company's financials and aggregates of the industry. Hitherto, all the three years of the industry aggregates corresponded to the latest year of the company's industry classification. Now, each of the three years of industry aggregates would correspond to the industry classification of the company in the respective years.

54,595 companies

Subscription till: 09 Mar 2024

Announcements

20 Aug 2018 05:11 PM
Peer comparison and benchmarking reports to be updated continuously

16 Jul 2018 12:05 PM
Five new tabulations added in PACE

14 Jun 2017 12:46 PM
Interim annual balance sheet ratio report added in PACE

more..

News Links & M I

14 Oct 2023 03:05 PM
Infosys Q3 Preview: Expect muted revenue growth; deal pipelines to be in focus

09 Oct 2023 12:05 PM
HCLTech, Tech Mahindra have more scope for entry level hirings

03 Oct 2023 03:11 PM
Indian IT companies seen logging record sequential growth in Q3 amid sustained macro overhang

26 Sep 2023 03:11 PM
No updates available on Infosys' Rajarhat Software Development Centre project

20 Sep 2023 03:16 PM
Capgemini acquires HDL Design to expand chip capabilities

more..

Stock Announcements

05 Oct 2023 03:17 PM
Infosys Ltd.-Infosys To Announce Second Quarter Results On October 12, 2023

05 Oct 2023 03:14 PM
Infosys Ltd.-Updates

05 Oct 2023 03:14 PM
Infosys Ltd.-Updates



VIKRAM SARABHAI LIBRARY

Read Experience And Discover

**Log in to the Remote Access
site for off-campus access**

Link -

<https://library.iima.ac.in/service/remote-access.html>



VISIT OUR WEBSITE

library.iima.ac.in

FOR RESOURCE RELATED HELP

reference@iima.ac.in

FOR ACCESS RELATED HELP

database@iima.ac.in

FOR REMOTE LOGIN HELP

libraryit@iima.ac.in

CATCH US ON
SOCIAL MEDIA



[/VSLIIMA](https://www.facebook.com/VSLIIMA)



[/VSL_IIMA](https://www.instagram.com/VSL_IIMA)



[@VSLIIMA](https://www.youtube.com/@VSLIIMA)

VSL Database Guide | For Internal Use Only

Updated till 11-10-2023