

# CMIE ProwessIQ Installation

Steps to install the latest version of Prowess IQ on your machine:

1. Visit <https://prowessiq.cmie.com>
2. Use the Download Prowess IQ link on the right panel to download the Prowess IQ setup file
3. Execute the downloaded setup file to install Prowess IQ which will create a shortcut on the desktop.
4. Login with your user name and password to start working on the database.

Home | FAQs | LinkedIn | Twitter

CMIE ProwessIQ Prowess for Interactive Querying  
Most Comprehensive Database on Indian Companies

Financial performance of 38,188 companies

**About ProwessIQ**  
ProwessIQ, or Prowess for Interactive Querying, is a powerful internet-based application for querying CMIE's database on performances of listed and unlisted companies. It is simple and easy to use. ProwessIQ provides charting

**CMIE launches ProwessIQ**  
CMIE's on-going efforts to evolve its products to make them more and more user-friendly and technologically superior resulted in the development of the internet-based version of its classic desktop-based Prowess installation. This internet-based version is christened Prowess for Interactive Querying, Prowess IQ.  
The development of ProwessIQ is in response to a long standing demand of Prowess users to port the database from the desktop to the internet without

**Login**  
Username:   
Password:   
[Forgot Password](#) | [Register](#)

[Request for Subscription service](#)  
Monitoring Indian

Alert | Home | My Profile | Feedback | Seek Clarifications | FAQs | Logout

CMIE ProwessIQ Prowess for Interactive Querying  
Most Comprehensive Database on Indian Companies

Financial performance of 38,188 companies

Knowledge Base | News & Extracts | ProwessIQ Data Dictionary | Documents

Subscription till: 06-04-2017

**Account Since Subscription**  
Hits  
Purchased 15,000  
Consumed 6  
Balance 14,994

**A Database of Business Entities**  
Prowess is a database of the financials of Indian companies. Annual Reports of companies is the most.. [more ..](#)

**ProwessIQ User Interface**

22 Mar 2016 9:56 AM

**Additions, deletions & updatedness**  
The Prowess database keeps expanding in terms of the total number of companies covered. There are many reasons why more and more companies will get added to the database. And, there are good reasons why there will be very few deletions. As a result, on a net basis, the count of companies in the Prowess database will keep rising.  
Companies keep getting added because new companies are formed regularly. As information on such new companies become available, they get added into the Prowess database. A company gets added into the Prowess database only if it meets the conditions of availability of the audited and complete Annual Report or the availability of the interim financial statements of a listed company.

**Download**  
[ Dated: 29 Apr'16 ]  
**ProwessIQ Software**  
Download your ProwessIQ user interface for querying the Prowess database of financial performance of companies. You can install it on any computer running on Windows.  
Download & installation is free.  
File size: 12.03 MB



prowessiq\_setup

Double Click On 'prowessiq\_setup'  
To Install

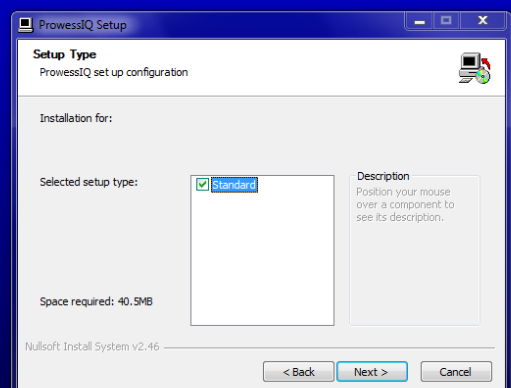
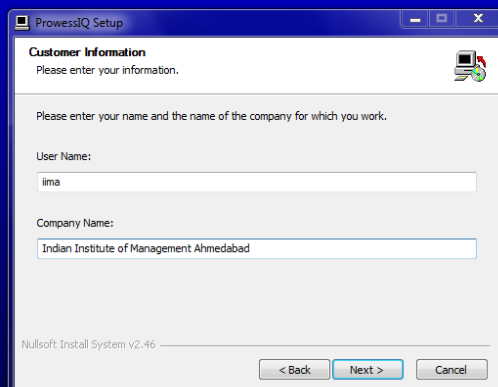
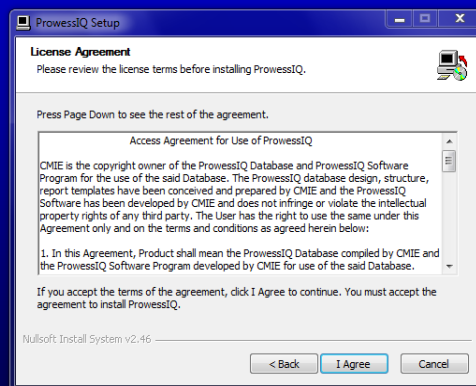
## ProwessIQ (1.2)

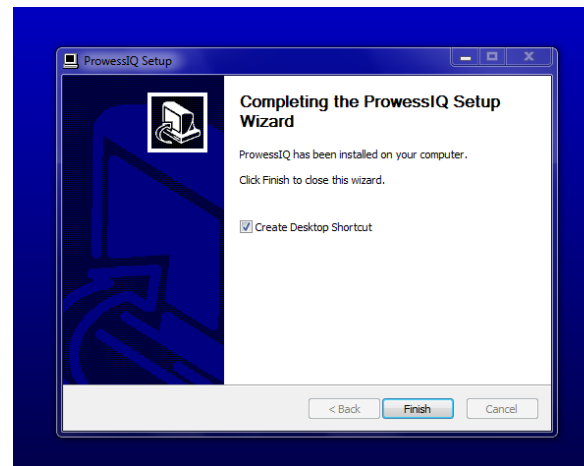
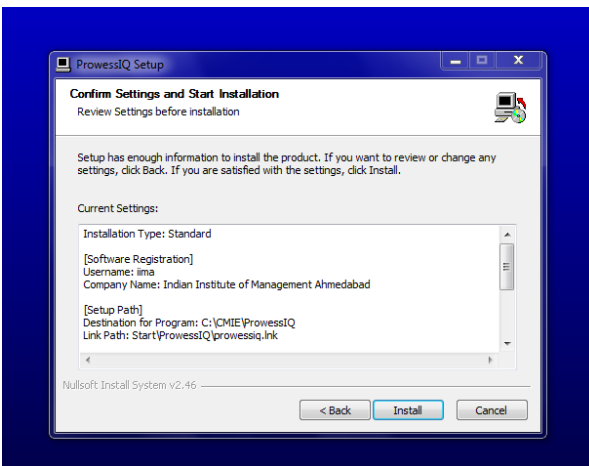
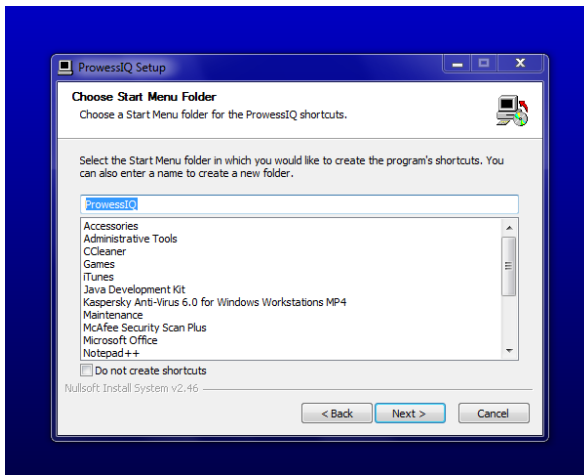
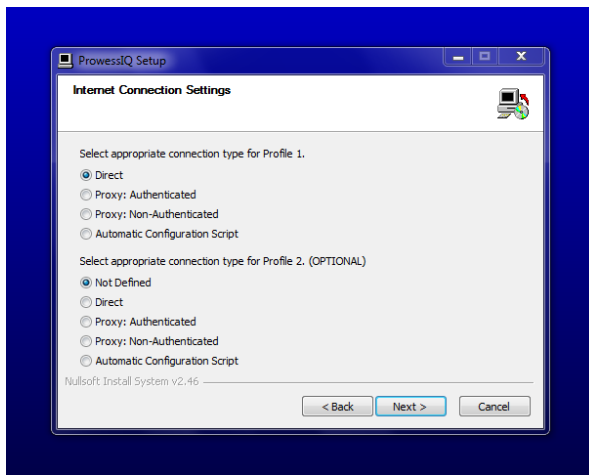
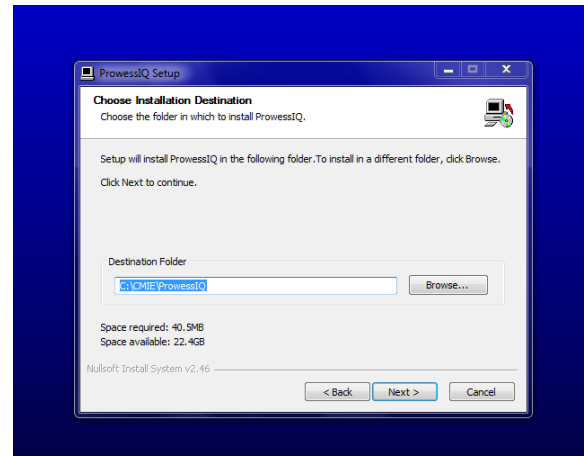
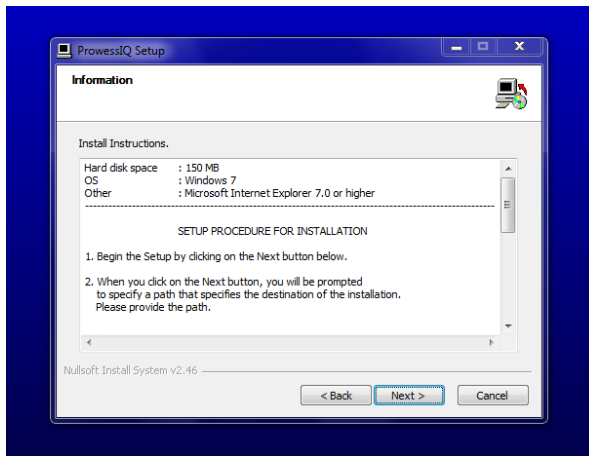
*Most Comprehensive Database on Financial Performance of Indian Companies*



## ProwessIQ (1.2)

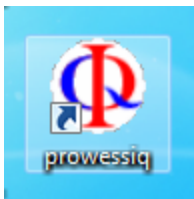
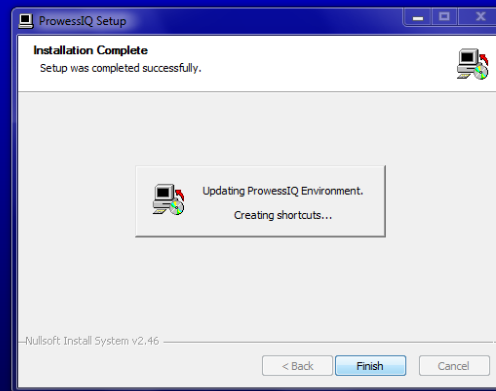
*Most Comprehensive Database on Financial Performance of Indian Companies*





## ProwessIQ (1.2)

*Most Comprehensive Database on Financial Performance of Indian Companies*



Click On PowessIQ Icon On Desktop

ProwessIQ

Query Builder

Output View

Report Viewer/Chart Plotter

Work Sheet

Commands History and Planner

Trigger Name:

Search

History

←

→

Clear

Copy

Paste

Clipboard

☐ Status Bar

☐ Query Pane

View

Select a file type :

Upload

Download

Upload / Download File

Currency :

Exchange :

Observation :

Misc

Annualise OFF

Planner OFF


☐ Freeze Reports

Reload Report

Clear Report Cache

Refresh

NEW OUTPUTS

Examining your internet settings...

ProwessIQ

Query Builder   Output View   Report Viewer/Chart Plotter   Work Sheet   Commands History and Planner

Trigger Name:  Search

History :

Query Tab Panel

Select a file type :

Upload   Download

Currency :  Exchange :  Observation :

Annualise OFF   Planner OFF   Freeze Reports

Refresh

To seek clarification on content and operations, visit <http://prowessiq.cmie.com>

Queued: 0, Processing: 0   NEW OUTPUTS

ProwessIQ - HTTP Connection Settings

ProwessIQ was unable to access the Internet using the settings in profile 1 and 2. Kindly enter the correct settings below or contact your System administrator to resolve the issue.

Profile1   Profile2  

Connection Type :

Automatic Configuration Script :

Address :  ☐ Authenticated Script

IP Address :  Username :

Port No :  Password :

Test Connection Log

Click On

Discover IE Connection Settings

ProwessIQ

Query Builder   Output View   Report Viewer/Chart Plotter   Work Sheet   Commands History and Planner

Trigger Name:  Search

History :

Query Tab Panel

:   :   :

Refresh

To seek clarification on content and operations, visi

Queued: 0, Processing: 0

NEW OUTPUTS

ProwessIQ - HTTP Connection Settings

ProwessIQ was unable to access the Internet using the settings in profile 1 and 2. Kindly enter the correct settings below or contact your System administrator to resolve the issue.

Profile1 Profile2

Connection Type :

Automatic Configuration Script :

Address :  ☐ Authenticated Script

IP Address :  Username :

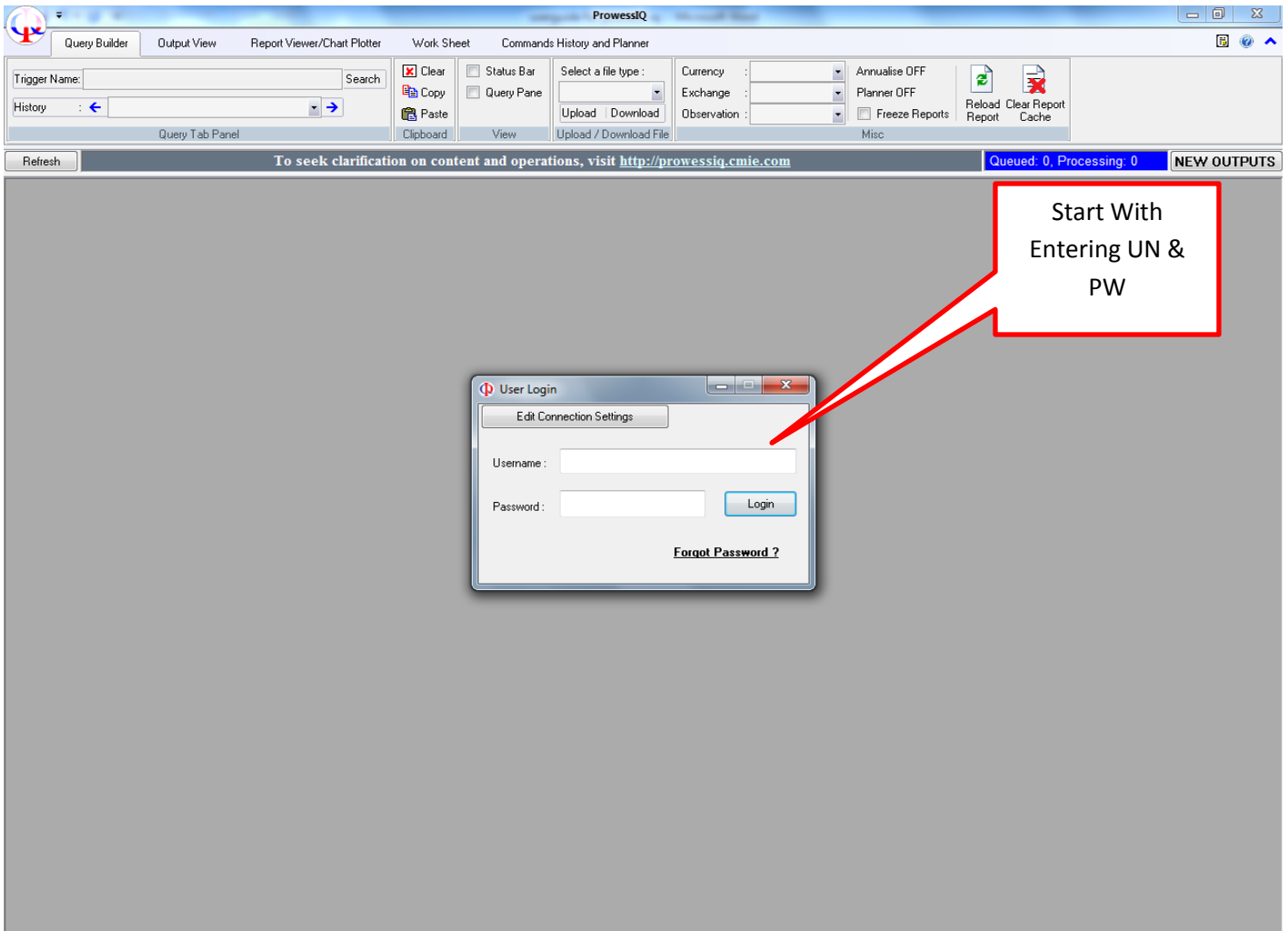
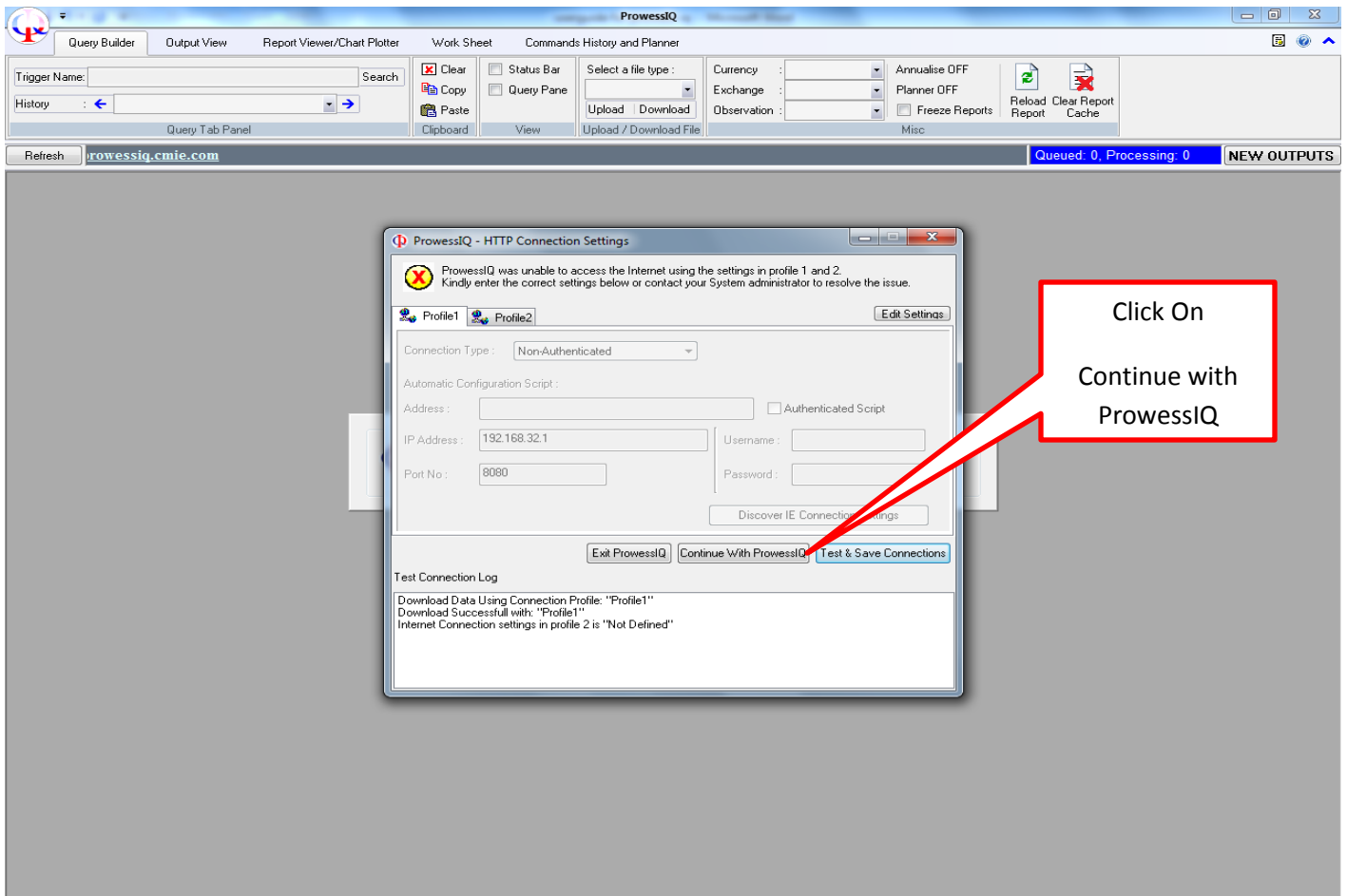
Port No :  Password :

Test Connection Log

Click On

Test & Save

Connections





# Home Page (Query Builder) - ProwessIQ

ProwessIQ <Username: iima> - [Financial Statements : Companies by Annual Financial Statements]

Query Builder   Output View   Report Viewer/Chart Plotter   Work Sheet   Commands History and Planner

Trigger Name:  Search

History :  Annual Financial Statements

Clipboard   View   Upload / Download File

Currency : Rs. Million   Annualise OFF   Exchange : BSE   Planner OFF   Observation :   Freeze Reports   Reload Report   Clear Report   Cache

Refresh   To seek clarification on content and operations, visit <http://prowessiq.cmie.com>   Queued: 0, Processing: 0   NEW OUTPUTS

Companies and Sets

Company Address and Identity Indicators

Ownership Structure and Governance Indicators

Financial Statements

- ☒ Annual Financial Statements
- ☐ Interim Financial Statements
- ☐ Industry-wise Exposure of Banks
- ☐ RBI Approval of ECB
- ☐ Credit Ratings
- ☐ Schedule of Investments

Stock Prices and Capital Changes

Business Segments and Products

CapEx and M&A

Miscellaneous

Indices and Index Numbers

Query   Advanced Query

Search

Unselect Indicators

Select Indicator	Annual Finance	Range From	Range To	Unit
	S	C		

Query on Date/s  L

Output Date/s  AP

Select Domain

- ☒ All Companies
- ☐ Companies in current OSC

Select Output Destination

Row	Col	Indc	Time
Column	Time	Cos	Cos
SubCol1	Indc	Time	Indc

Execute

Add to current OSC

Send to new OSC

Replace current OSC

Database Timestamp: 07 Jun 2016,15:35:01   Freeze Reports / Charts   PLAN MODE   ANNUALISE   CAP   NUM   SCRL