

# DEALSCAN QUICK REFERENCE GUIDE

## DEALSCAN

The DealScan database — accessible through Thomson Reuters LPC's LoanConnector platform — is the world's number one source for comprehensive, reliable historical deal information on the global loan markets. DealScan is intuitive, user-friendly and powerful, featuring nearly 200 search fields.

Utilize this Quick Reference Card to drill down and understand the most common tasks performed using DealScan.

## SUPPORT

**AMERICAS:** (1) 646-223-6890 (select opt. 2, then opt. 1) | [lpc.americas@thomsonreuters.com](mailto:lpc.americas@thomsonreuters.com)

**ASIA-PACIFIC:** Asia-Pacific — (852) 2294-8853 | [lpc.asiapacific@thomsonreuters.com](mailto:lpc.asiapacific@thomsonreuters.com)

Japanese language support — (81) 120-161-916

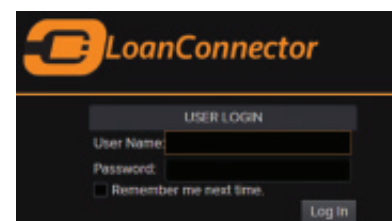
**EMEA:** (44) 800-44-2000 (select opt. 4, then opt. 3) | [lpc.europe@thomsonreuters.com](mailto:lpc.europe@thomsonreuters.com)

## GETTING STARTED

To use DealScan, begin by going to the LoanConnector platform:

<http://www.loanconnector.com>. Enter your e-mail address in the username field and your LoanConnector password in the password field.

From there, click the DealScan tab along the top portion of the page.



## DEALSCAN SEARCH

Navigating DealScan is easy: The default screen is populated with headers that contain possible search items. Click "Collapse All" to see the full headers available, then expand each header as needed to expose and select the fields you want. Conversely, you can click "more fields" to expose the same customization fields in a pop-up window and make your selections from there. Once you've made your selection, click "update selected fields". Selections are reflected in search fields on DealScan main page. Once fields are set, they remain until you change them.

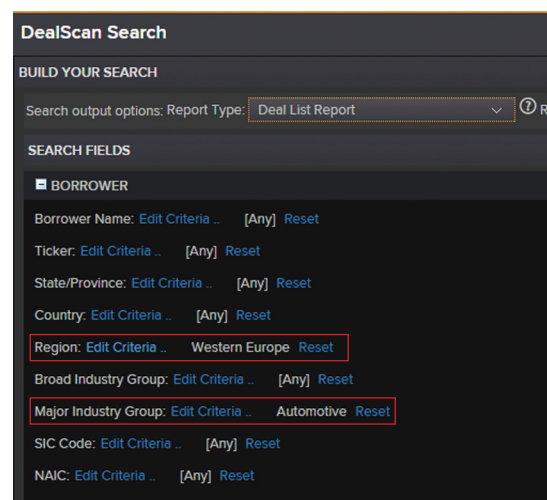
Users are encouraged to do broad-based searches in DealScan. After entering criteria in search fields, click report type and currency, then run report. When the details are returned, you will notice that DealScan has further broken down your results in fields on the left hand side. Navigate through these results to further drill down; after you select, click refresh and a new, refined search takes place. Once you have completed your search, you can scroll through to view the highlights of the tranche. You can also alter the report type by using the drop-down menu. Other options available include Chart (further customizable within the tool; the chart that's generated can be exported), Custom Report, Detailed Report, League Table Report, Bank Inventory Report and Totals and Averages Report.

## DEALSCAN NAVIGATION TIPS

To fully understand the intuitive, powerful nature of DealScan and its tools, this guide will walk you through a standard sample search.

Dealscan allows you to search on a broad range of information and utilize predefined filters to narrow your search results and quickly get you the information you are looking for. For instance, if you were looking for loan information in the Western European Automotive market, you can perform an initial search based on those criteria in a Deal List report (or any report type) and then filters to redefine your results:

1. Under "**Borrower**" in the search fields drop down, click "**Edit Criteria**" next to Region. Select **Western Europe**, then click the right-facing arrows to add it to your search criteria. Click save.



- In the same section, click **"Edit Criteria"** alongside **Major Industry Group**. Select **Automotive**, then click the right-facing arrow to add it to your search criteria. Click save.
- Make sure **Report Type** is selected in the **Search Output Options** section, select your Report Currency (in this case, the Euro) then click **"Run Search."**

In this example, that broad search yielded 1,649 results - probably more than most users want or need. We will get to the fast, intuitive way DealScan helps you narrow your focus in a moment. But first, take a look in the main window to see the breadth of content DealScan has returned. The deals listed in your results are broken down by and are searchable by myriad criteria, including Borrower Name, Tranche Type, Tranche Active Date, Market Segment, Average Bid, Average Ask, and many more. As with the rest of LoanConnector, all blue fields in DealScan are clickable. Click the name of the company and you're taken to that company's **Company Page**\* in LoanConnector. Clicking on the Tranche Type opens a box with full details on the tranche. Clicking the check box alongside any deal listed enables you to add the tranche to your **Watchlist**\*.

For more information on Company Pages, Watchlists, and everything else LoanConnector offers, consult your LoanConnector Quick Reference Guide, available at [www.loanpricing.com/newloanconnector](http://www.loanpricing.com/newloanconnector) or by contacting your Thomson Reuters LPC representative.

Now — to narrow those results.

On the left side of the page, notice that DealScan has provided a detailed breakdown of the 1,649 results generated by the search. For this example, let's narrow by clicking the **Takeover** filter in the **Deal Purpose** window, which DealScan has shown will narrow our results to 60 deals. A pop-up window opens, telling us the filter has been changed. Click **Refresh**.

The new records are displayed in the main window as before, and the left hand navigation has updated too - showing further ways in which our search can be filtered.

From there, let's filter the results even further.

In the Tranche Type window click “Term Loan” (Deal Scan has told us there are 23 records), then click refresh in the pop-up window. Again, the new search results are displayed in the main window, and the left hand navigation is showing ways to drill down further if that’s desired.

If you want to display your results in something other than the Deal List Report, just go to the Report Type drop-down menu and select from the other available options: Chart, Custom Report, Detailed Report, League Table Report, Bank Inventory Report, and Totals And Averages Report. You can run any report type at any time on any initial search criteria and/or filter categories that you have selected. Your results will conform to the report selected.

For this example, let's run a Totals And Average Report by selecting that option from the drop-down and clicking Run Report.

Our results - maintaining the search criteria we selected - now have been displayed in a Totals And Averages Report, which is also filterable by a number of criteria.

Tranche Level

Deal Level

View Selected Detail Report

Download

Add Tranche to Watchlist

[New Watchlist]

1 - 20 of 1649

<< First < Prev 1 2 3 Next > Last >>

<input type="checkbox"/>	Borrower Name	Region	Country	Major Industry Group	Tranche Type	Tranche Active Date	Tranche Maturity Date	Tranche An
<input type="checkbox"/>	Adam Opel AG	Western Europe	Germany	Automotive	Bridge Loan	31-May-2009		No
<input type="checkbox"/>	Adam Opel AG	Western Europe	Germany	Automotive	Lease	27-Mar-2002	26-Jun-2007	No
<input type="checkbox"/>	Adam Opel AG	Western Europe	Germany	Automotive	Lease	27-Mar-2002	26-Jun-2008	No
<input type="checkbox"/>	Adam Opel AG	Western Europe	Germany	Automotive	Lease	27-Mar-2002	26-Mar-2009	No
<input type="checkbox"/>	Adam Opel AG	Western Europe	Germany	Automotive	Lease	27-Mar-2002	26-Mar-2011	No
<input type="checkbox"/>	Adam Opel AG	Western Europe	Germany	Automotive	Revolver/Line >= 1 Yr	18-Jun-1999	17-Jun-2004	No

**FORMAT YOUR RESULT**      Report Type: **Deal List**

**FILTERS**      Applied Filters      Reset Filters

☒ Collapse/Expand All

☒ DEAL AMOUNT(EUR) (9)

- ☐ 0 ~ 0.5(2)
- ☐ 1 ~ 10(15)
- ☐ 10 ~ 50(73)
- ☐ 50 ~ 100(72)
- ☐ 100 ~ 500(751)

Show More...

☒ DEAL PURPOSE (24)

- ☐ General Purpose(513)
- ☐ Leveraged Buyout(428)
- ☐ General Purpose/Refinance(166)
- ☐ Recapitalization(139)
- ☒ Takeover(60)

Show More...

☒ TRANCHE AMOUNT(EUR) (10)

- ☐ 0 ~ 0.5(5)
- ☐ 0.5 ~ 1(9)
- ☐ Euro(24)
- ☐ Great Britain Pound(18)
- ☐ U.S. Dollar(12)
- ☐ French Franc(2)
- ☐ Swedish Krona(2)

Show More...

☒ TRANCHE TYPE (7)

- ☒ Term Loan(23)
- ☐ Revolver/Line >= 1 Yr.(21)
- ☐ Revolver/Line < 1 Yr.(7)
- ☐ Other Loan(3)
- ☐ Acquisition Facility(3)

Show More...

☒ SPREAD/MARGIN (3)

- ☐ 0 ~ <100(8)
- ☐ 100 ~ <225(15)
- ☐ >= 450(3)

☒ BASE/REFERENCE RATE (2)

- ☐ LIBOR(19)
- ☐ Euribor(7)

☒ COUNTRY (2)

FORMAT YOUR RESULT

Report Type: Totals And Average Report

Report Currency: Euro

Run Report

FILTERS

Applied Filters

Reset Filters

TOTALS AND AVERAGE REPORT

Note: Use the dropdowns below to group the deals.

Download

DEAL AMOUNT(EUR) (5)

50 ~ 100(2)

100 ~ 500(11)

500 ~ 1000(1)

1000 ~ 5000(3)

10000 ~ 100000(2)

TRANCHE AMOUNT(EUR) (6)

1 ~ 10(1)

10 ~ 50(5)

50 ~ 100(2)

100 ~ 500(7)

500 ~ 1000(2)

TRANCHE MATURITY DATE (6)

01-Jan-1999 ~ 31-Dec-2001(1)

01-Jan-2002 ~ 31-Dec-2004(5)

01-Jan-2005 ~ 31-Dec-2007(6)

01-Jan-2008 ~ 31-Dec-2010(3)

01-Jan-2011 ~ 31-Dec-2013(3)

TRANCHE ACTIVE DATE (4)

01-Jan-1997 ~ 31-Dec-1999(6)

01-Jan-2000 ~ 31-Dec-2002(6)

01-Jan-2006 ~ 31-Dec-2008(5)

01-Jan-2009 ~ 31-Dec-2011(6)

TRANCHE CURRENCY (6)

Euro(9)

Great Britain Pound(7)

U.S. Dollar(3)

Swedish Krona(2)

CATEGORIZE BY

Year

-- Select --

GO

TOTALS

AVERAGES

No. of Facilities

No. of Deals

Total Volume (EUR m)

Facility Size (EUR m)

Tenor (Mos)

LIB+ (bps)

Overall Totals and Averages

23

15

9568.74

503.62

53.00

133.61

1997

1

1

60.00

95.00

Total

1

1

60.00

95.00

1998

2

2

16.00

45.00

Total

2

2

16.00

45.00

1999

3

3

734.78

367.39

67.67

156.25

Total

3

3

734.78

367.39

67.67

156.25

2000

5

3

599.92

119.98

65.80

158.33

Total

5

3

599.92

119.98

65.80

158.33

2002

1

1

73.15

73.15

66.00

150.00

Total

1

1

73.15

73.15

66.00

150.00

2006

3

2

6292.45

2097.48

36.00

125.00

Total

3

2

6292.45

2097.48

36.00

125.00

2007

2

1

72.85

36.42

60.00

Total

2

1

72.85

36.42

60.00

2009

2

1

1500.00

750.00

12.00

Total

2

1

1500.00

750.00

12.00

2011

4

2

295.59

73.90

60.00

Total

4

2

295.59

73.90

60.00

## NEW SEARCH FIELDS IN DEALSCAN

In addition to its new look and feel, intuitive new search functions and secondary loan market content, DealScan has added some new fields that loan market professionals will find useful:

### TRANCHE SECTION

- **Tranche CUSIP** has been added. CUSIPs are a common identifier for the loan market
- **Country of syndication** is a searchable field, which is useful for creating volume statistics similar to LPC published reports, and also useful for identifying cross-border deals.
- **New Money**, used to identify tranches with new money lent to the borrower - has been added
- **Amend & Extend flag**, which identifies tranches that were amend and extended

### SECONDARY PRICING

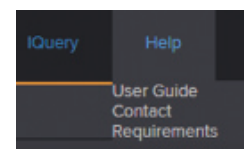
- All fields listed provide a gateway into LPC's secondary loan data

### SPREAD/FEE

- **Floor:** Users can search loans with a particular floor or floor range for margins.
- **Original Issue Discount (OIDs):** users can search for loans with OIDS.

## DEALSCAN HELP

If you need assistance while navigating DealScan, click the **Help** button on the top navigation bar in LoanConnector. LoanConnector help is thorough and powerful, covering every facet of the platform - including DealScan - in an effort to help you find the answer to your question. The **User Guide** portion is a logical guide covering the entire site and its functionality. Essentially, you can get the answer to any question about LoanConnector and DealScan by using the help tab.



Thomson Reuters LPC recommends using Google Chrome as your browser when running LoanConnector. You may use Microsoft Internet Explorer 10 or higher or the most current version of Firefox, but Chrome is the preferred browser.

## SUPPORT

### AMERICAS:

(1) 646-223-6890

(select opt. 2, then opt. 1)

[lpc.americas@thomsonreuters.com](mailto:lpc.americas@thomsonreuters.com)

### ASIA-PACIFIC:

Asia-Pacific: (852) 2294-8853

Japanese language: (81) 120-161-916

[lpc.asiapacific@thomsonreuters.com](mailto:lpc.asiapacific@thomsonreuters.com)

### EMEA:

(44) 800-44-2000

(select opt. 4, then opt. 3)

[lpc.europe@thomsonreuters.com](mailto:lpc.europe@thomsonreuters.com)

# LOANCONNECTOR QUICK REFERENCE GUIDE

## LOANCONNECTOR

LoanConnector is Thomson Reuters LPC's one-stop solution for the global primary and secondary loan markets. It provides instant market intelligence and access to detailed news, data and analysis, including late-breaking news, forward deal calendars, pricing grids, historical data, industry analysis and much more, empowering you with the information you need to be successful in today's market.

Utilize this Quick Reference Card to drill down and understand the most common tasks performed using LoanConnector.

## SUPPORT

**AMERICAS:** (1) 646-223-6890 (select opt. 2, then opt. 1) | [lpc.americas@thomsonreuters.com](mailto:lpc.americas@thomsonreuters.com)

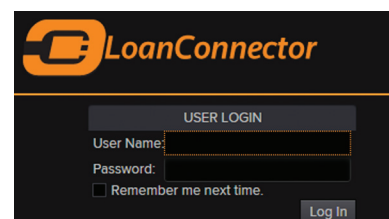
**ASIA-PACIFIC:** Asia-Pacific – (852) 2294-8853 | [lpc.asiapacific@thomsonreuters.com](mailto:lpc.asiapacific@thomsonreuters.com)

Japanese language support – (81) 120-161-916

**EMEA:** (44) 800-44-2000 (select opt. 4, then opt. 3) | [lpc.europe@thomsonreuters.com](mailto:lpc.europe@thomsonreuters.com)

## GETTING STARTED

Go to the LoanConnector platform: <http://www.loanconnector.com>. Enter **your e-mail address** in the username field and your LoanConnector password in the password field.



**LoanConnector**

USER LOGIN

User Name:

Password:

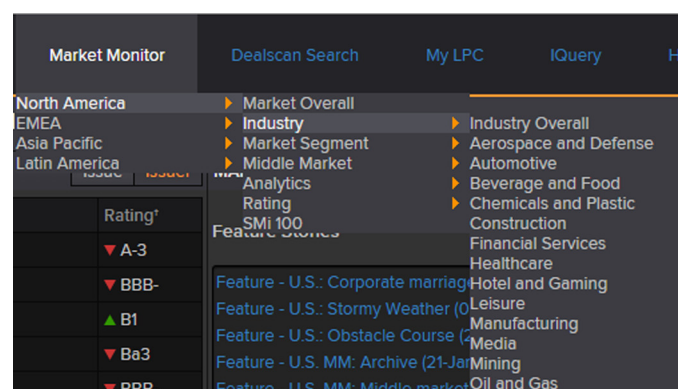
☐ Remember me next time.

## LOANCONNECTOR NAVIGATION TIPS

**Using landing pages.** LoanConnector's framework is built around what we refer to as landing pages. When you first log on, you will be taken to a landing page based on your geographic location and a "market overall" setting. From there, you can begin modifying and customizing LoanConnector.

To get a good feel for LoanConnector's content and navigation, start by reviewing your landing page options.

Hover over **Market Monitor** in the upper left hand corner of the screen. From there you can search through more than 100 geographic and segment criteria and select your landing page. Begin by selecting the region you are interested in, then drill down using the large number of industry and segment drop-down items.



From here you can get a very good idea as to the breadth of content and the intuitive functionality offered by LoanConnector.

Along the left hand column of any landing page you will see a series of static quick data views. **Ratings, Company Hotlist, Data Bank** and **Secondary Bid Highlights** are displayed and populated with content based upon the region and market you have selected for that landing page:

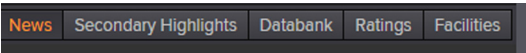
- **Ratings:** Displays the five most recent ratings – at both the issuer and issue level – for your market and region and is updated daily. Get more information by clicking on UPGRADES, DOWNGRADES, NEW RATINGS and WATCH CHANGES
- **Company Hotlist:** A list of the most frequently-clicked names over the past seven days in LoanConnector.
- **Data Bank:** This field shows high level stats on the primary and secondary markets (there is a tab for each) for the region and market you have selected.
- **Secondary Bid Highlights (Daily Movers):** This shows the top 25 daily movers for priced loans in your region

RATINGS		Issue	Issuer
Borrower	Rating		
Placer Dome Inc	▼ A-3		
Placer Dome Inc	▼ BBB-		
GrafTech International	▲ B1		
GrafTech International	▼ Ba3		
Barrick Gold Corp	▼ BBB-		
View All Within Segment:			
<ul style="list-style-type: none"> <li>• Upgrades</li> <li>• Downgrades</li> <li>• New Ratings</li> <li>• Watch Changes</li> </ul>			
COMPANY HOTLIST			
Borrower (Top 6 Queried)			



TAB NAVIGATION

Along the top right of the main section of your LoanConnector landing page you will see a series of tabs which help you find the specific information you may be seeking: NEWS, SECONDARY HIGHLIGHTS, DATA BANK, RATINGS, and FACILITIES. The default view is the NEWS tab.



- News:** In the center of the landing page you see the FEATURE STORIES section, containing reports from LPC’s dedicated staff of editors and reporters. Below that is LoanConnector’s BREAKING NEWS, which is filtered using four different views. Select “current landing page” to see only news associated with your selected market, “global news” to see all news from Thomson Reuters LPC, “secondary market news” or “most popular news.” Choose from a set of established date ranges in the “date range” drop-down box, or “set custom” to create your own range.
- Secondary Highlights:** Highlights of significant daily price movers. Scroll to view a number of categories. View information for that day, that week, or that month. Information can be downloaded or added to a WATCHLIST.
- Data Bank:** Summary statistics on Primary and Secondary facilities from your selected market segment.
- Ratings:** Updated daily, this tab shows the issue and issuer ratings updated over the last 30 days. You can further filter this data by clicking on a series of tabs: UPGRADES, DOWNGRADES, NEW RATINGS and WATCH CHANGES.
- Facilities:** A list of every active tranche in the market segment you’ve selected; results can be filtered to show only those with an “active secondary price”. Data is sortable by column headings in blue across the top of the frame. From your results, click the borrower name to go to the company page, click the LIN to go to the instrument page, etc.

COMPANY PAGES

Clicking on a company name anywhere within LoanConnector will bring you to that company’s page. (If you’re specifically seeking a company page, the fastest way to get there is by using the top-line search box, detailed later in this guide.)

Company pages feature a brief overview of the company, including SEC filings, SIC codes (where applicable) and a list of comparable firms. Like the landing pages, company pages also feature tabs to help you find the information you need:

- News and Analytics:** News stories pertaining to that company, along with relevant analytics (ratings, pricing grids, indices, cross market comps, etc.).
- Instruments:** Every instrument LPC has in its database for that company. Filters on the page help you drill down. Clicking on “details” under “more info” launches a pop-up with terms and conditions and a pricing chart. Click on tranche type to open a detail report, breaking down all T&Cs on the bank loan. The Instruments tab can be filtered further, by loans, bonds, equities, and quick view, which shows all three asset types.
- Ratings:** Ratings information for the firm, including Most recent bank loan rating action, Most recent issuer rating action and Ratings history.
- Loan Details/Docs:** Detail reports and filings on any loan available in LoanConnector.

Ford Motor Co			
OVERVIEW		MARKET	
Ticker	F	NEWS	
Website	www.ford.com	Date (ET)	Description
Location	DEARBORN Michigan 48126-2701 United States	24-Feb-2015 18:41 PM	(NY) Update 1: Leela's first story
Sales	146,916,999,168	09-Oct-2014 04:36 AM	(HK) China: Ten seal Rmb2bn Ford Automotive Finan
SEC Filings	Search Filings	03-Mar-2014 16:11 PM	(NY) Ford markets amendment for \$12B in loans
[-] Industry (SIC Code)		03-Mar-2014 05:57 AM	Gold Sheets Feature: U.S. loan market still full throttle
Motor vehicles and car bodies (3711)		01-May-2013 11:37 AM	(NY) Correction: Ford allocates \$10.72B credit
[-] Subsidiaries		29-Apr-2013 16:34 PM	(NY) Ford allocates \$12B credit
Associates Corp of North America		15-Mar-2013 12:52 PM	(NY) Ford to expand credit, extend maturities, cut pri
Axus Italiana		13-Mar-2013 12:59 PM	(NY) Ford's looks for extension, price to market
FCE Bank Plc [Ford Credit Europe]		03-Jan-2013 09:08 AM	(NY) ANNOUNCED: Ford Motor Co USD benchmark 3
Ford Brazil		08-Aug-2012 03:40 AM	(HK) RTRS: Ford affiliate to expand into China's heavy
Ford Credit Standby Receivables Corp		24-May-2012 16:17 PM	(NY) I-Grade Snapshot: Ford reclaims assets
		22-May-2012 16:07 PM	Ratings: Ford unsec'd ratings raised to Baa3 (Moody's
		12-Mar-2012 15:07 PM	(NY) Ford's A&E deal allocates
		21-Feb-2012 14:50 PM	(NY) Pricing details emerge on Ford's A&E
		21-Feb-2012 12:28 PM	(NY) Ford looks for A&E
		20-Oct-2011 15:58 PM	(NY) Ford sees limited costs, new flexibility in UAW pe
		15-Sep-2011 16:20 PM	(NY) Market slightly better in light trade
		14-Sep-2011 10:37 AM	(NY) Ford to repay remainder of TLB
		04-Feb-2011 16:46 PM	(NY) S&P/LSTA U.S. Leveraged Loan 100 Index
		04-Feb-2011 09:55 AM	(NY) S&P/LSTA U.S. Leveraged Loan 100 Index
		ANALYTICS	
		Date (ET)	Doc Type      Description
		15-Sep-2014 11:46 AM	Ratings Page      Ratings - U.S.: Alphabetical Listing
		23-Jun-2014 06:18 AM	Pricing Grid      Pricing Grid - U.S.: Investment Gra
		16-Jun-2014 15:27 PM	Pricing Grid      Pricing Grid - U.S.: Investment Gra
		09-Jun-2014 16:04 PM	Pricing Grid      Pricing Grid - U.S.: Investment Gra

DEALSCAN SEARCH

DealScan is the world’s number one source for searching and reporting on comprehensive and reliable historical loan terms and conditions, including access to 300,000 loan tranches. Now DealScan is more intuitive, more user friendly, and much more powerful, featuring nearly 200 search fields.

Navigating DealScan is easy: The default screen is populated with headers that contain possible search items. Click “Collapse All” to see the full list of search field categories available, then expand each category header to expose fields within that category. Conversely, you can click “more fields” to expose the same customization fields in a pop-up window and make your selections from there. Once you’ve made your selection within the “Add/Remove Search Field Pop-up, click “update selected fields”. Selections will be reflected in search fields on DealScan’s main page. Once fields are set, they remain until you change them.

BUILD YOUR SEARCH

Search output options: Report Type: Deal List Report Report Currency

SEARCH FIELDS

BORROWER

Borrower Name: Edit Criteria General Electric Capital Corp,General Motors Corp Reset

Ticker: Edit Criteria [Any] Reset

State/Province: Edit Criteria [Any] Reset

Country: Edit Criteria [Any] Reset

Region: Edit Criteria USA/Canada,Eastern Europe/Russia Reset

Broad Industry Group: Edit Criteria [Any] Reset

Major Industry Group: Edit Criteria [Any] Reset

SIC Code: Edit Criteria [Any] Reset

NAIC: Edit Criteria [Any] Reset

Borrower Type: Edit Criteria [Any] Reset

Parent: Edit Criteria [Any] Reset

Sponsor: Edit Criteria [Any] Reset

Guarantor: Edit Criteria [Any] Reset

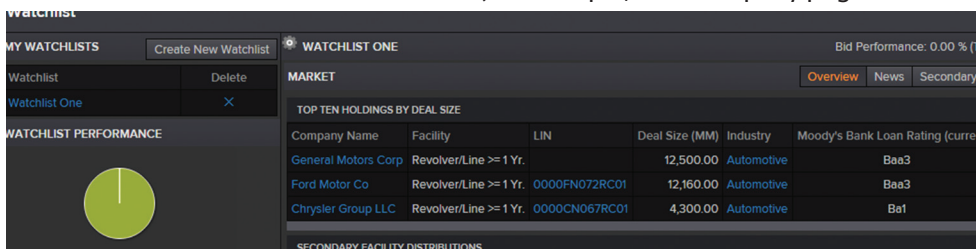
Users are encouraged to do broad-based searches in DealScan. After selecting criteria in search fields, select a “report type” and “report currency,” then “run report.” When the results are returned, you will notice that DealScan has further broken down your results on the left hand side under filters. Use these filters to drill down further; after you select, click refresh and a new, refined search takes place. You can also alter the report type by using the drop-down menu. Other options available include Chart (further customizable within the tool; the chart that’s generated can be exported), Custom Report, Detailed Report, League Table Report, Bank Inventory Report and Totals and Average Report.

For a much more detailed look at DealScan consult the **DEALSCAN QUICK REFERENCE GUIDE**, available from your LPC representative or at [www.loanpricing.com/loanconnector](http://www.loanpricing.com/loanconnector)

## MYLPC

The MyLPC function in LoanConnector offers two customization tools; **My Watchlist** and **MyLPC Alerts**.

**My Watchlist:** This function enables users to identify loan tranches, add them to a watchlist, and then monitor news and pricing each day. Anywhere you see a check box next to a loan in LoanConnector (for example, on a company page or within the facilities tab on any landing page), that loan can be added to your Watchlist. Click the check box, then locate the “add to watchlist” button. When you create a new watchlist or add tranches to existing watchlists, LoanConnector confirms the addition for you at the top of the page.



Click My LPC, then My Watchlist to find your watchlists. (Note: it will take one day to begin seeing daily prices in your watchlist, but news and other stats are immediately visible.)

The layout within My Watchlist is similar to that of the landing pages in LoanConnector, with the left-hand menu showing summary statistics based on the loans in your watchlist (Watchlist performance, ratings, data bank, Secondary Bid Highlights). Like the other landing pages on LoanConnector, there are a series of tabs through which you can navigate:

- **Overview:** The default tab, this displays a performance chart showing how the loans in your watchlist performed against the market overall, as well as boxes showing tranche distributions for that day, that week and that month, and another showing top ten holdings by deal size.
- **News:** Displays all LoanConnector news related to the loans in your watchlist
- **Secondary Bid Highlights:** Highlights significant daily price movers for the loans in your watchlist
- **Databank:** Shows primary and secondary statistics from your watchlist
- **Details:** Allows you to pick and choose certain terms and conditions for the loans in your watchlist; click the gear box next to the facilities button to further customize the terms and conditions listed for your watchlist on this particular tab. Choose and arrange the fields you want, then click “modify.”

**My LPC Alerts:** This feature allows users to set up e-mail alerts which they will receive on a daily basis:

- **Daily Digest:** A summary report, based on criteria you have chosen, that is sent once a day (at 6:00 PM in your region)
- **MyLPC notifications:** Sends an e-mail each time content is uploaded to LoanConnector that matches your criteria.

You select the region, market, and document type (choose from the drop-down list) you want to receive updates for. Select up to 30 companies (start typing in the box and LoanConnector begins to auto-fill), select up to 30 industries, enter specific keywords (use drop-down for available keywords). Once you have made your selections, click Save Alerts; the box on right shows your choices and tells you that the functionality is on. You can toggle the function on and off with the switch on the right hand side. Clicking “off” suspends the sending of alerts.

The screenshot shows the 'CUSTOMIZE YOUR ALERTS' form. It is divided into two main sections: 'AVAILABLE CRITERIA' and 'CURRENT SETTINGS'.

**AVAILABLE CRITERIA:**

- Notification Type:** Radio buttons for 'Daily Digest (Daily summary sent once)' (selected) and 'MyLPC Notifications (Notification for each new item)'.
- Region/Country(s):** Text box with 'North America' entered.
- Market(s):** Checkboxes for 'Primary Loan Market' (checked) and 'Secondary Loan Market' (checked).
- Doc Type(s):** Text box with 'News', 'Current Bids', 'Index', and 'Feature' entered.
- Company(s):** Text box with 'Ford Motor Co', 'Toyota Motor Corp', and 'BMW AG' entered.
- Industry(s):** Empty text box.

**CURRENT SETTINGS:**

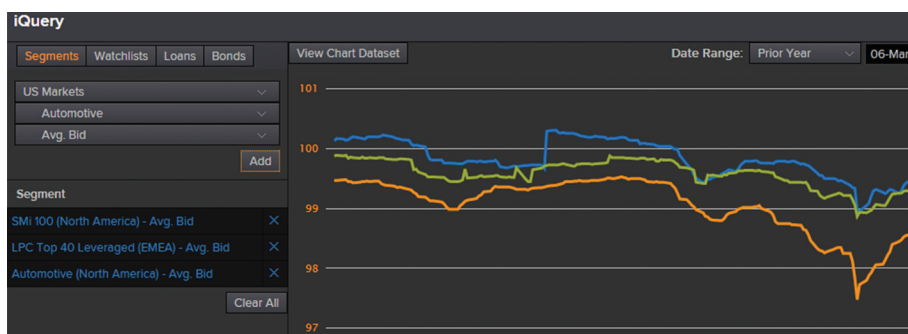
- Alerts:** Switch is turned ON.
- Email To:** Empty text box.
- Notification Type:** 'Daily Digest'.
- Region/Country(s):** 'North America'.
- Market(s):** 'Primary Loan Market, Secondary Loan Market'.
- Document Type(s):** 'News'.
- Company(s):** Empty text box.
- Industry(s):** Empty text box.

## IQUERY

**IQUERY** is used for charting secondary loan price history.

The default view charts the SMi 100 and the LPC Top 40 Leveraged benchmarks for the statistic “average bid.” From there you can begin customizing:

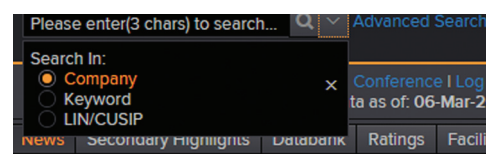
- From the **Segments** drop-down on the left, select the segments and statistics you wish to add to the chart, then click “add”. The additions are now reflected on the chart alongside the SMi 100 and LPC Top 40 (both of which can be removed by clicking “x” alongside their listing in the segment box).
- The **Watchlists** drop-down enables users to add their watchlists to the chart.
- The **Loans** drop-down adds loans to the chart; enter company name in the field, then add facilities and data below. Check the desired boxes, then click “add.” The loans are now posted to the chart against the previously-entered data.
- The **Bonds** drop-down (new to iQuery) shows bonds for any entity that has loans to trade. (Note: not every bond will be listed in LoanConnector.) Enter a company to search, and if they have bonds, those can be added to your chart.



The date range can be changed by utilizing the tools on the upper right hand portion of the screen. Your results can also be downloaded; just click the “View Chart Dataset” button, then click “download.”

## SEARCH / ADVANCED SEARCH

The top navigation bar search in LoanConnector is a fast and intuitive to search through the news, data and analysis available on LoanConnector. There are three options for searching: search by **Company**, by **Keyword**, or by **LIN/CUSIP**. Start by clicking the drop-down arrow on the search box to choose one of these search criteria, then begin typing. The box auto fills as you type, narrowing your search. When you reach your desired search item, click the magnifying glass next to the box to perform the search. A successful company search will take you to that company’s page; a successful keyword search will display content pertaining to that keyword in the main frame, with filters on the left to narrow your search; a successful LIN/CUSIP search will display the loan and enable you to click for more details.

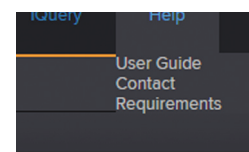


### ADVANCED SEARCH

Advanced search is a powerful tool, used to make LoanConnector searches as focused and specific as possible. A long list of criteria covering dates, geography, industry, deal specifics and more can be selected to perform incredibly targeted searches. Search criteria can be saved and used again.

## LOANCONNECTOR HELP

If you need assistance while navigating LoanConnector, click the **Help** button on the top navigation bar. LoanConnector help is complete and powerful, covering every facet of the platform in an effort to help you find the answer to your question. The **User Guide** portion is a logical guide covering the entire site and its functionality. You can get the answer to almost any question about LoanConnector by using the help tab.



Thomson Reuters LPC recommends using Google Chrome as your browser when running LoanConnector. You may use Microsoft Internet Explorer 10 or higher or the most current version of Firefox, but Chrome is the preferred browser.

## SUPPORT

### AMERICAS:

(1) 646-223-6890

(select opt. 2, then opt. 1)

[lpc.americas@thomsonreuters.com](mailto:lpc.americas@thomsonreuters.com)

### ASIA-PACIFIC:

Asia-Pacific: (852) 2294-8853

Japanese language: (81) 120-161-916

[lpc.asiapacific@thomsonreuters.com](mailto:lpc.asiapacific@thomsonreuters.com)

### EMEA:

(44) 800-44-2000

(select opt. 4, then opt. 3)

[lpc.europe@thomsonreuters.com](mailto:lpc.europe@thomsonreuters.com)